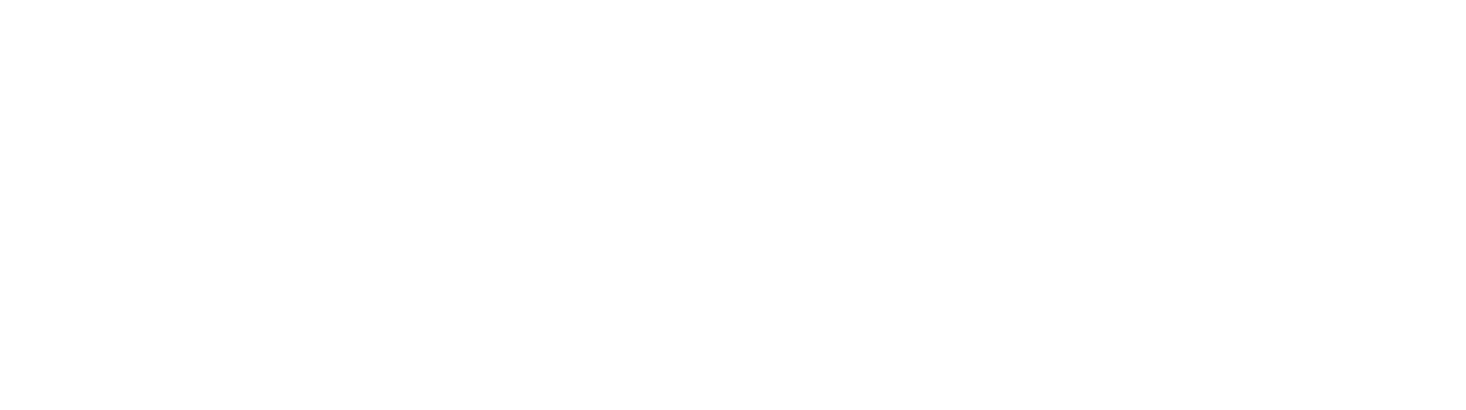


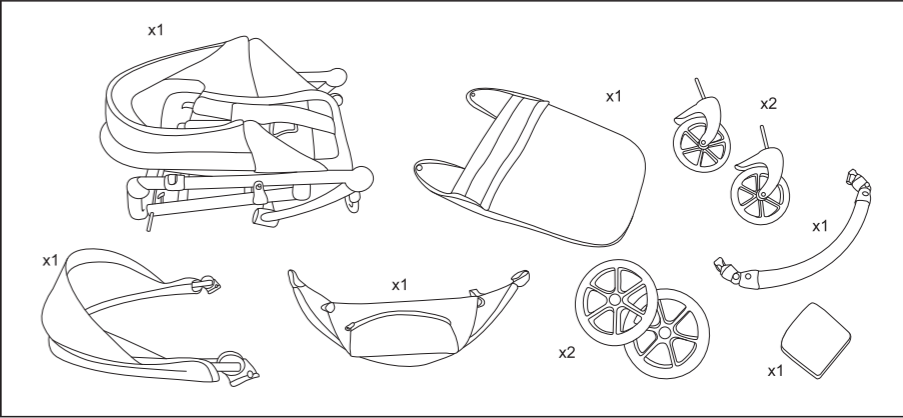
ZILLE

sprint

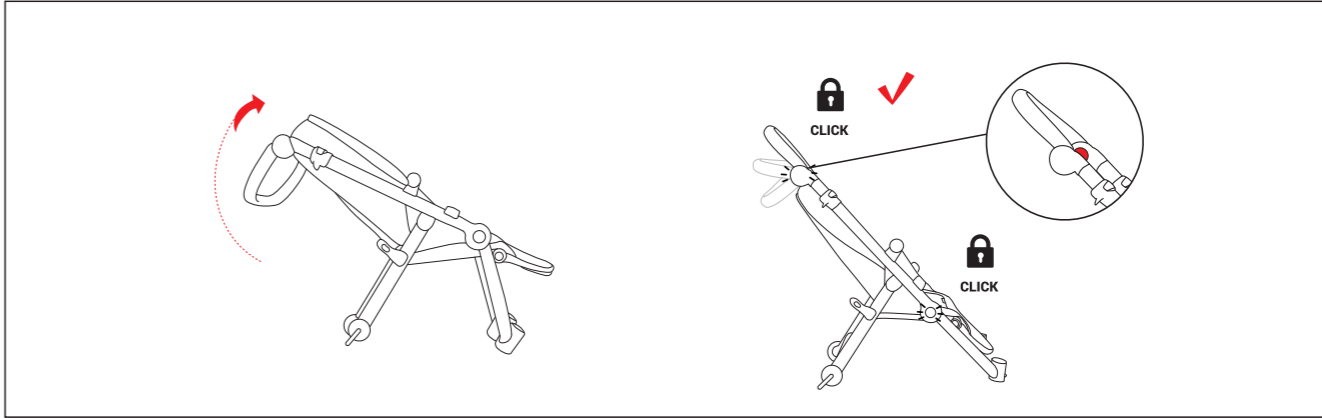
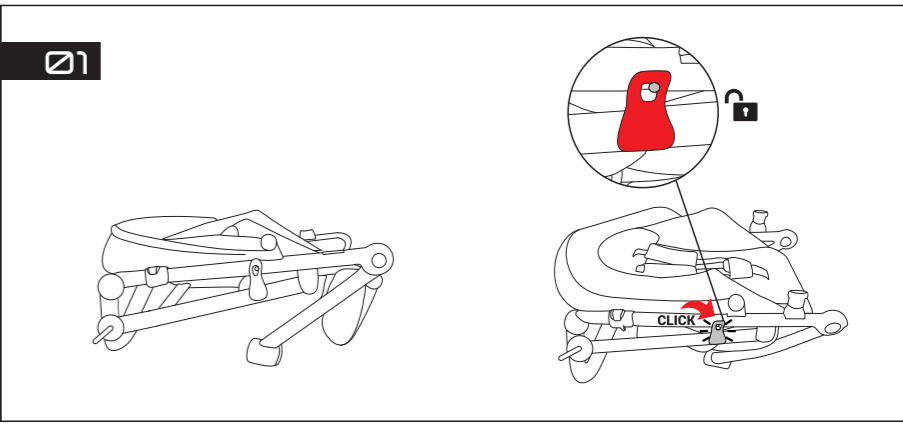
U S E R M A N U A L

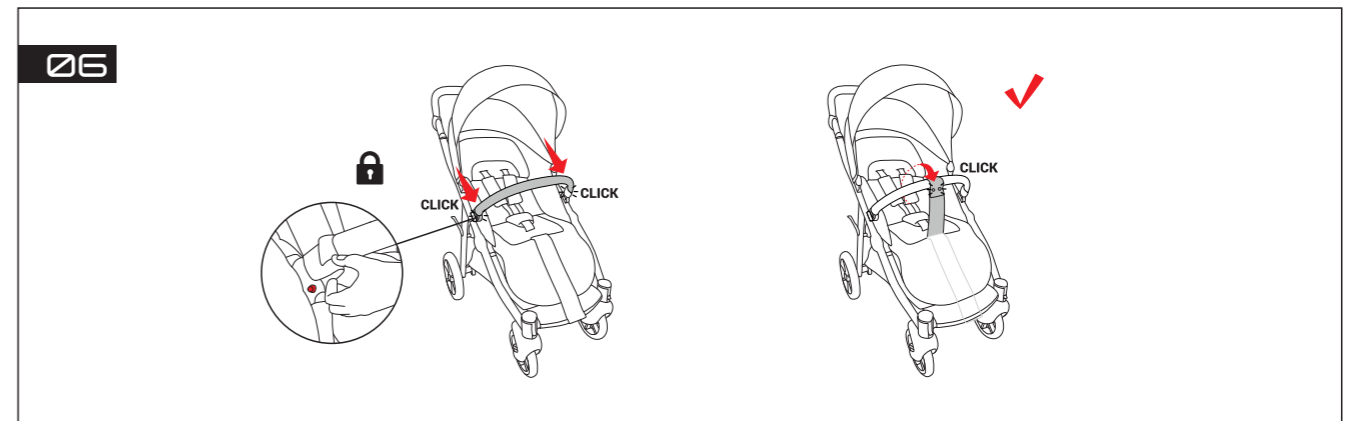
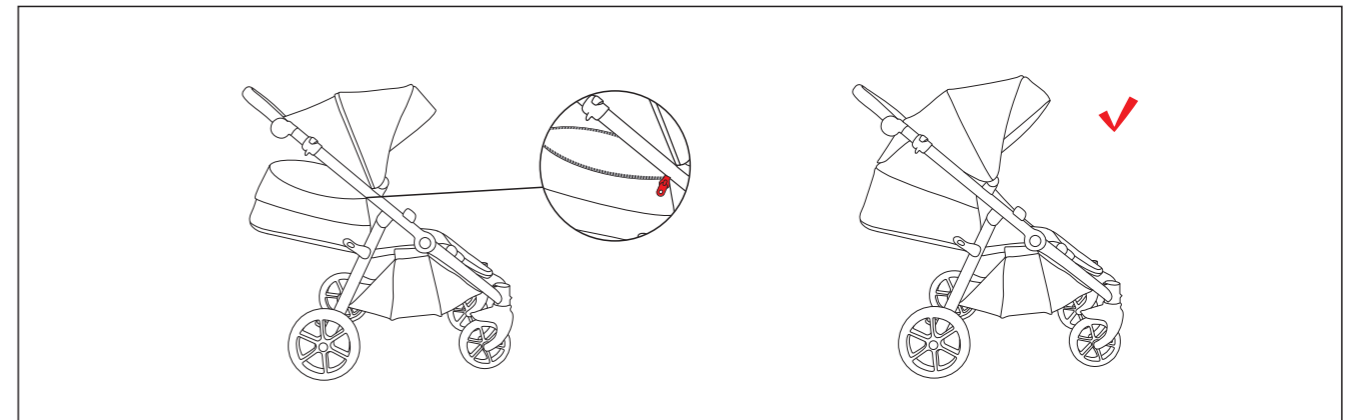
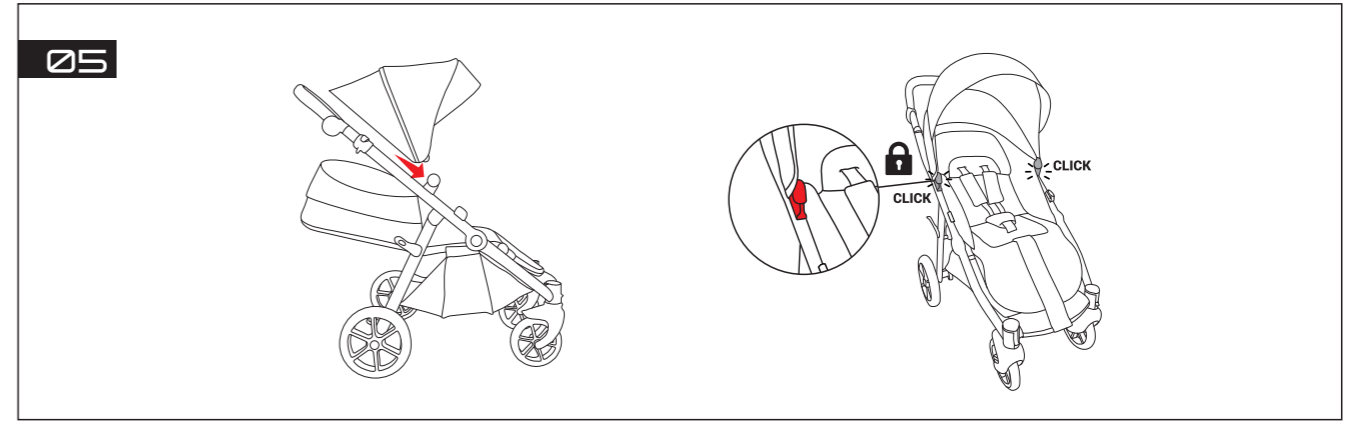
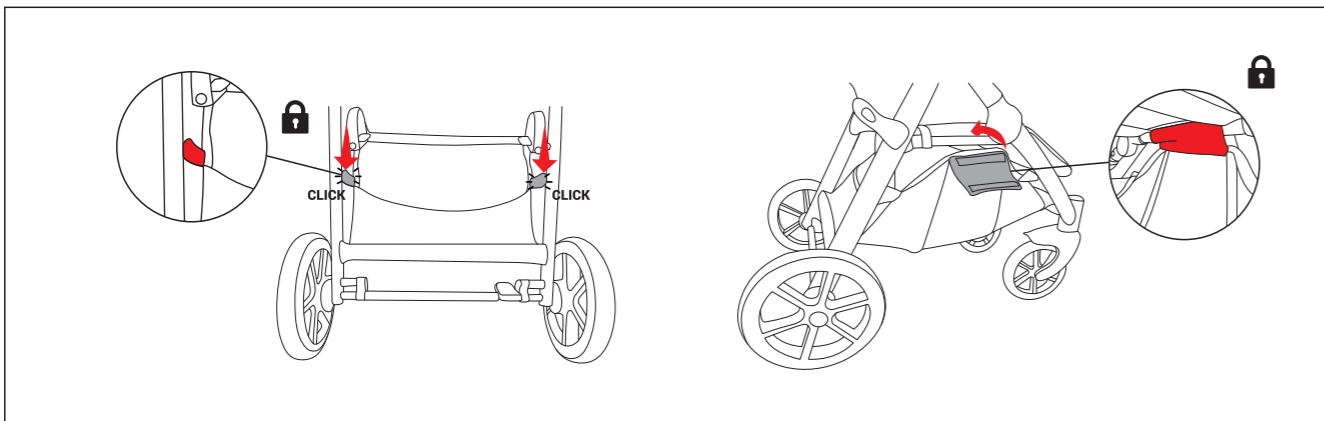
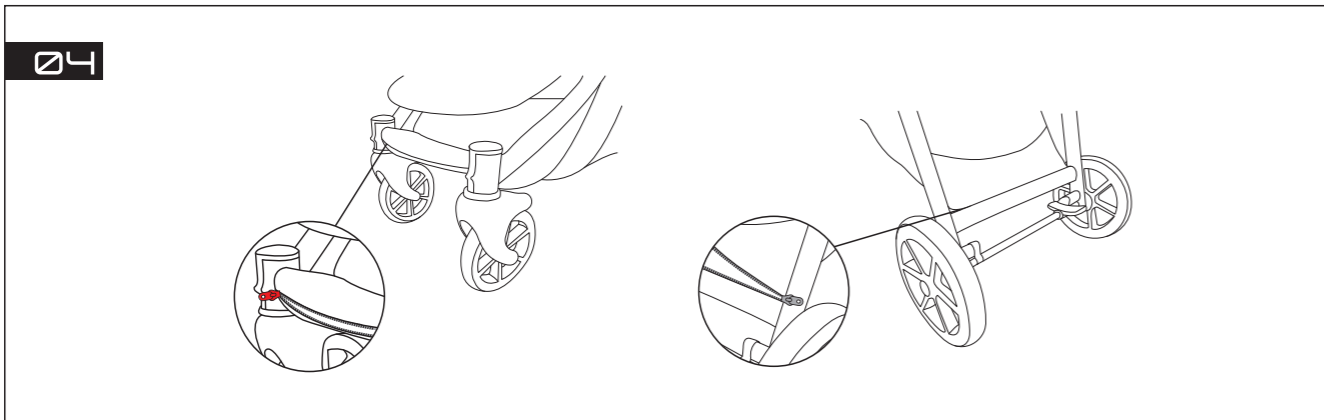
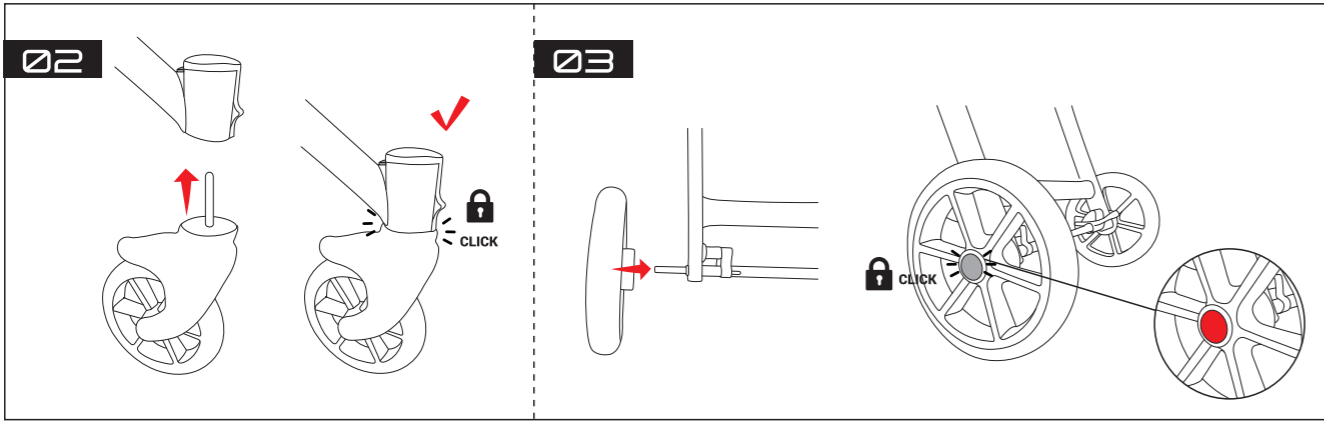


IN THE BOX



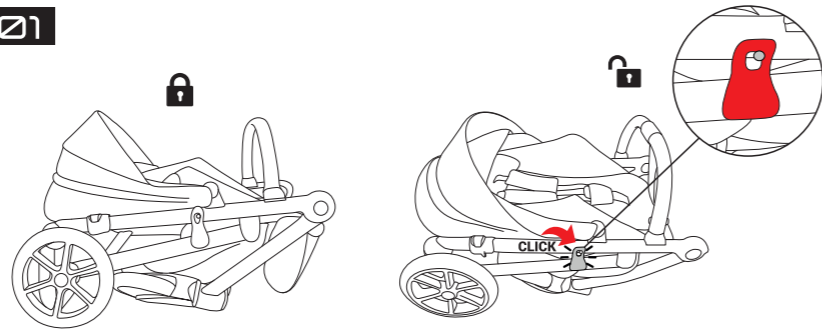
ASSEMBLING THE PRODUCT



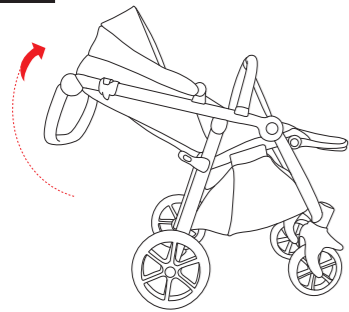


UNFOLDING/FOLDING UP THE CHASSIS

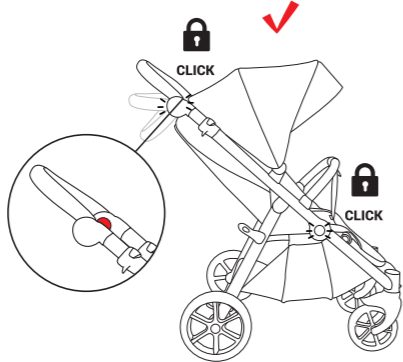
01



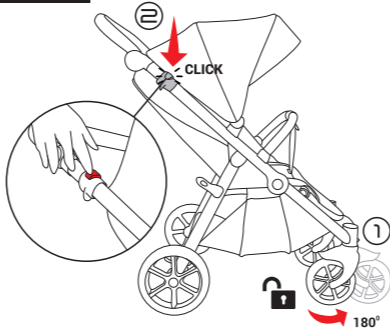
02



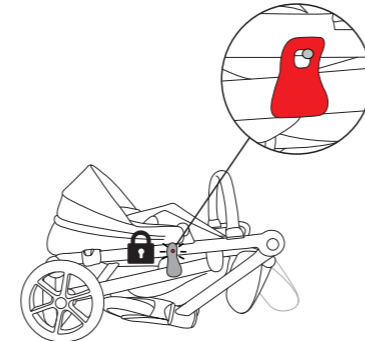
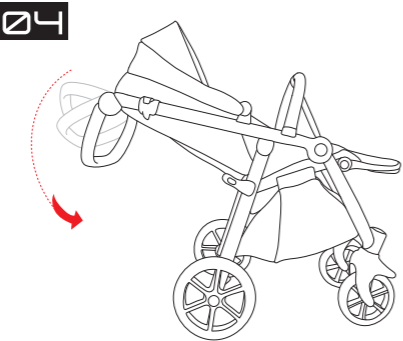
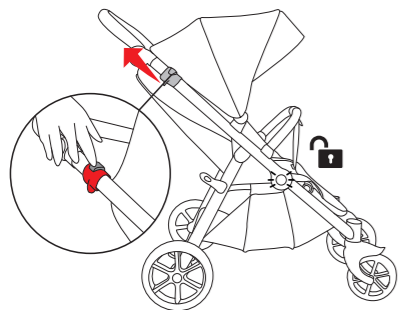
03



04

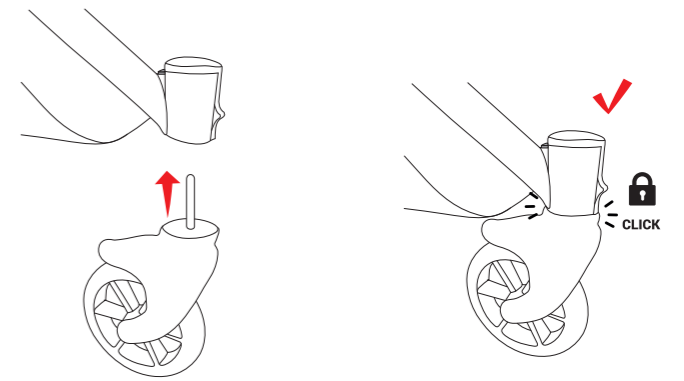


05

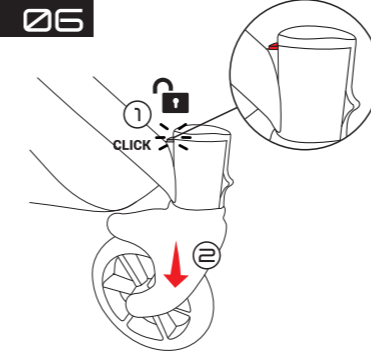


08

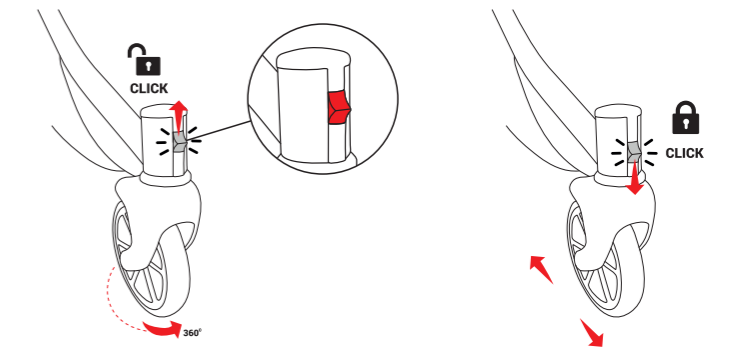
REMOVING AND LOCKING THE FRONT WHEELS



09

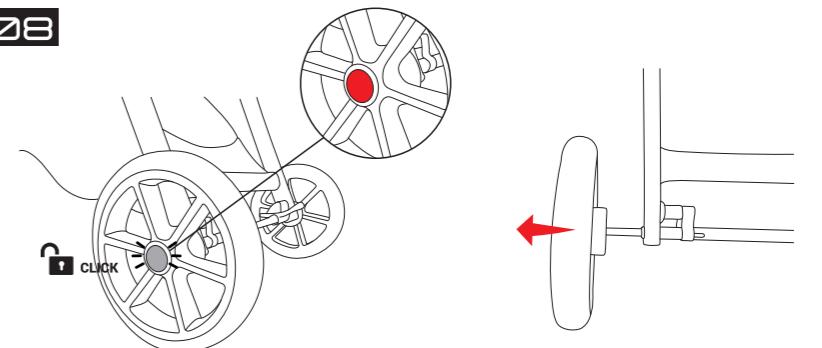


10

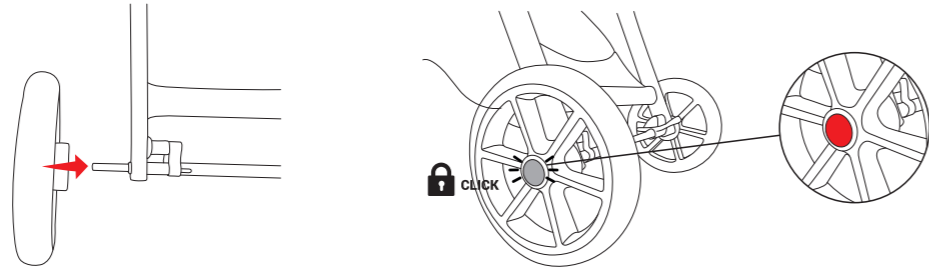


11

REMOVING FITTING THE REAR WHEELS

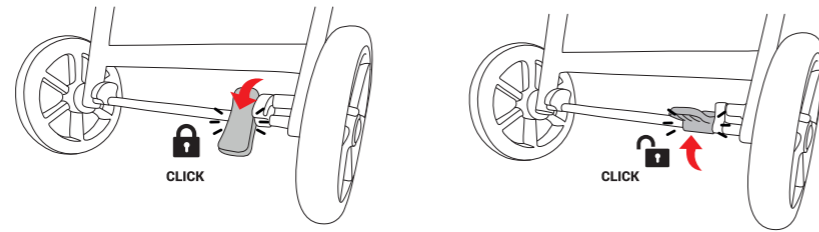


09



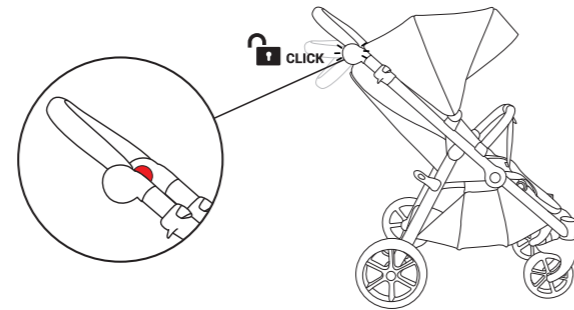
APPLYING AND
RELEASING THE BRAKE

10

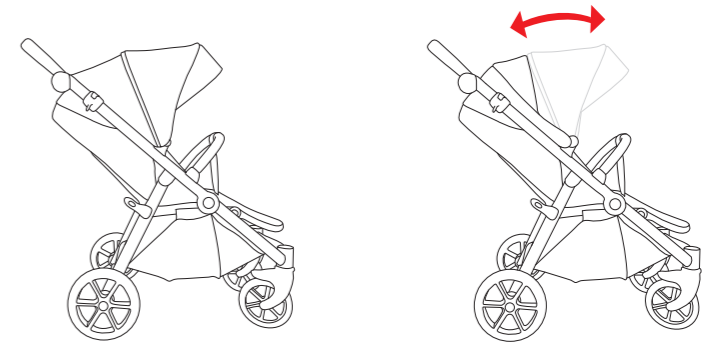


ADJUSTING THE
HANDLE ANGLE

11

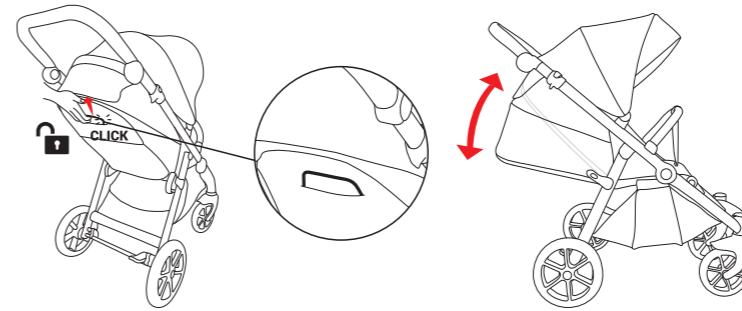


12

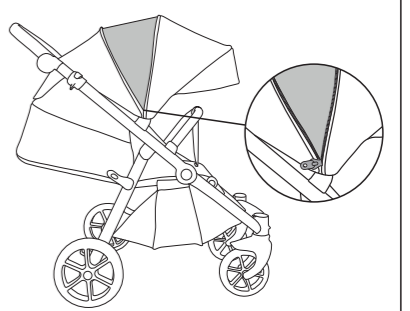


ADJUST CANOPY,
FOOTREST AND
LEG COVER

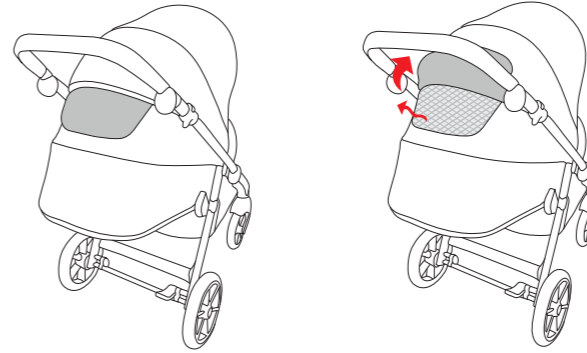
13



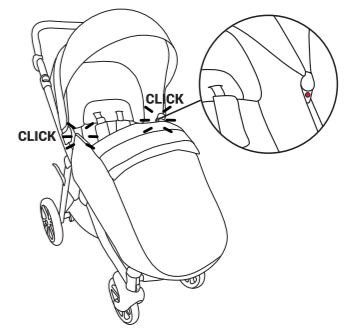
14

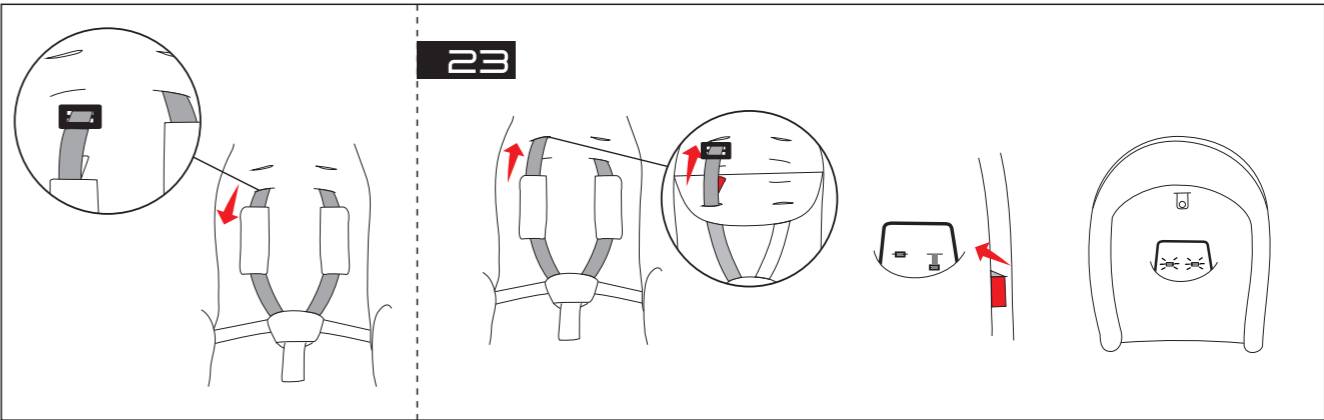
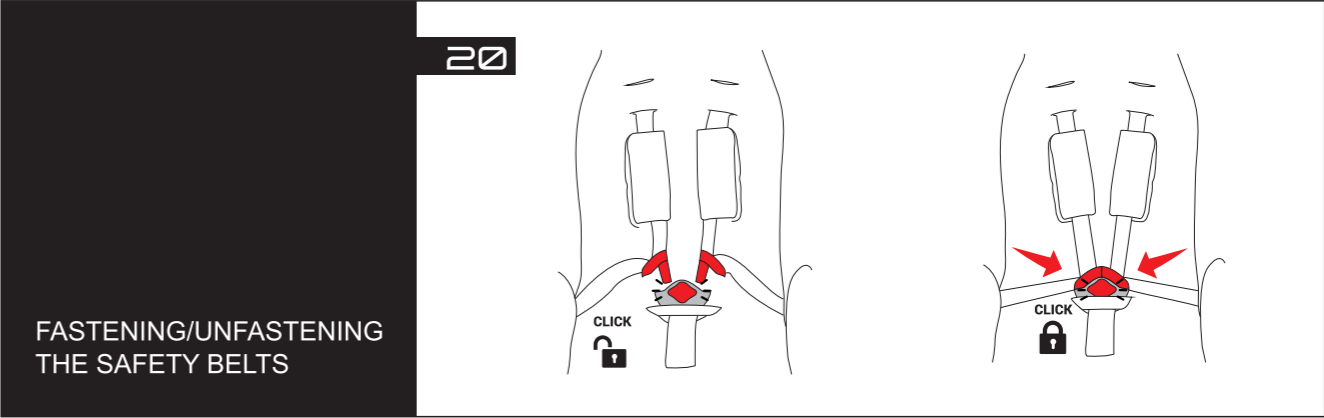
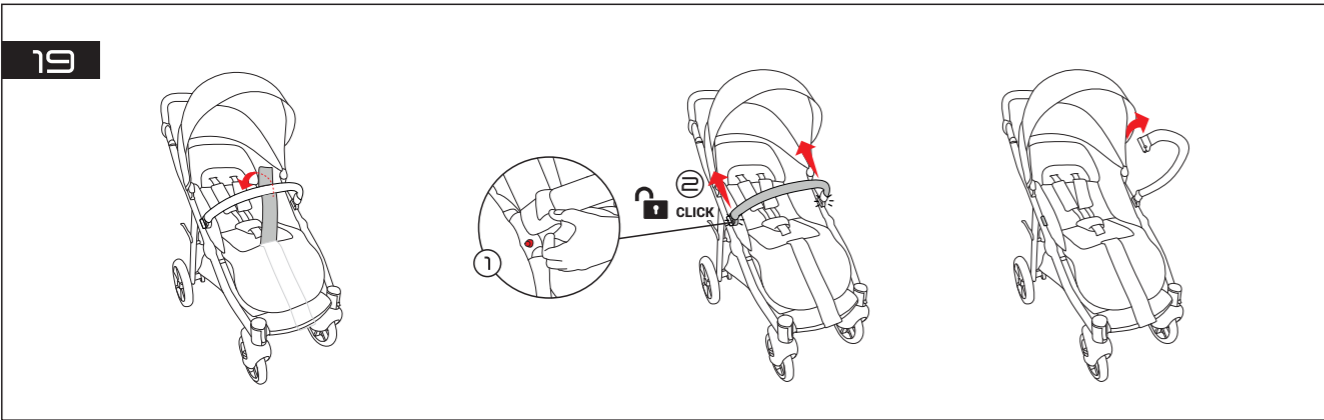
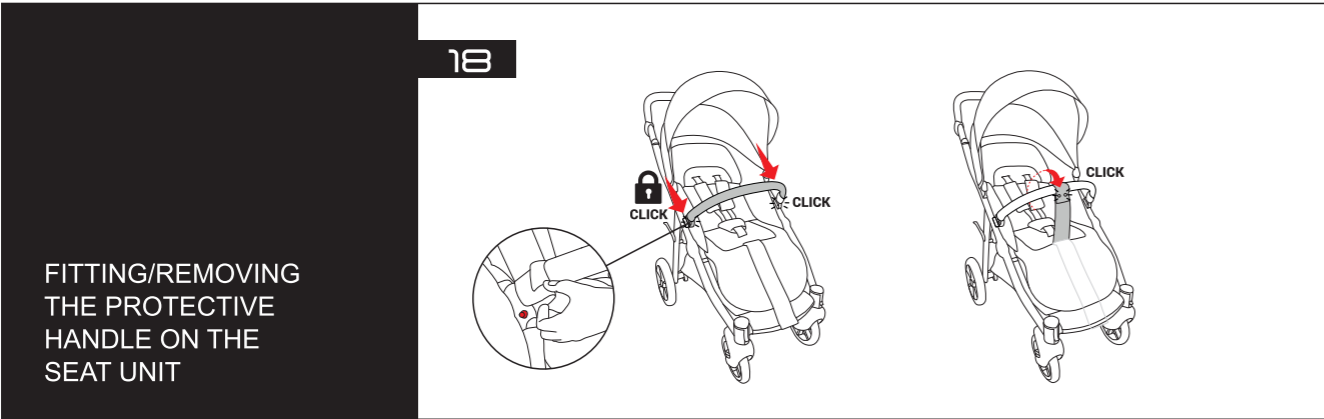
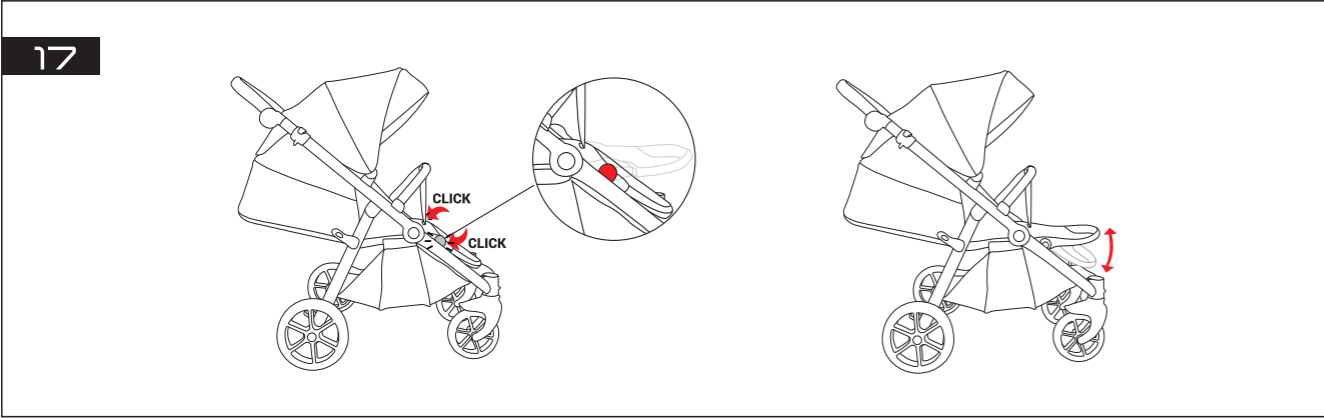


15



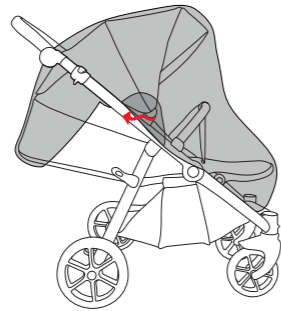
16



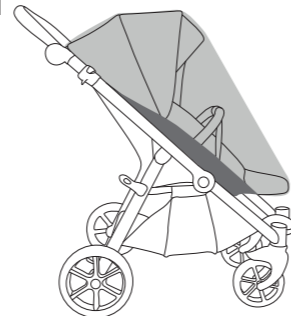


PROTECTION AGAINST
RAIN AND INSECTS

24



25



DEAR PARENTS!

Thank you so much for purchasing a TUTIS pushchair!

We have created this wonderful pushchair in accordance with EU standards. We are proud to present a solution that will provide your child with an exclusive level of comfort while being practical for you to use. Please read the instructions carefully and learn about all the possibilities that your pushchair offers. This will help to ensure the safety and comfort of your baby.

We hope that your TUTIS pushchair will be easy for your family to use and that it will play its part in many pleasant moments in your life!

With best wishes,
TUTUTIS

USEFUL SAFETY INFORMATION AND WARNINGS

IMPORTANT - failure to follow all warnings and instructions may result in serious injury or death. For your child's safety, read this owner's manual before using this product. This product has been created in accordance with to EN1888-2:2018 Safety requirements and test methods for pushchairs and prams.

WARNING:

- Important – read carefully and keep for future reference
- Never leave the child unattended
- Do not let the child play with this product
- This product is not suitable for running or skating.

WARNING BEFORE USE:

1. Ensure that all the locking devices are engaged before use.
2. To avoid injury ensure that the child is kept away when unfolding and folding this product.
3. **WARNING:** Check that the pram body or seat unit attachment devices are correctly engaged before use.
4. **WARNING:** Ensure that all the locking devices are engaged before use and always apply the brake when loading or unloading your child. Audible „click“ must be heard to confirm that all locks are engaged.
5. Before each use ensure that the harness is working properly.
6. Parking device shall be engaged when placing and removing the children.
7. Do not use the Tutis Zille Sprint if any part is broken, torn or missing. You should ensure that any damaged or worn parts are repaired immediately.

USAGE RESTRICTIONS

THE PRODUCT IN GENERAL

1. The Tutis Zille Sprint is suitable for children from 6 to 48 months. The maximum child weight is 22 kg.
2. The under-seat bag can hold a maximum of 2 kg.
3. The bag on the handlebar can hold a maximum of 2 kg.
4. Exceeding any load recommended by Tutis can give rise to unstable hazardous conditions.
5. Any load attached to the handlebar, seat or side of the pushchair will affect stability.
6. Take your child out of the Tutis Zille Sprint when going up or down stairs or on steep or unstable ground. Also take extra care when mounting or descending a kerb or on other uneven surfaces. Do not take your pushchair on escalators.
7. Take your child out of the Tutis Zille Sprint before folding up the frame.
8. Always apply the brake when the Tutis Zille Sprint is not in motion.
9. The Tutis Zille Sprint should only be used for one child at a time.
10. Do not use Tutis Zille Sprint parts, components or accessories in or on any non-approved pushchair or any other Tutis product.
11. Only use genuine Tutis replacement parts and Tutis accessories or products approved by Tutis in or on the Tutis Zille Sprint. Using products not approved by Tutis is unsafe.
12. Strings can cause strangulation! Do not place items with a string, such as hood strings or dummy cords, around your child's neck. Do not suspend strings over a seat unit or attach strings to toys.
13. Do not use the Tutis Zille Sprint or any of its components near a naked flame or other sources of heat. Avoid exposing the Tutis Zille Sprint to extreme temperatures.
14. Use extra caution when using the pushchair on or near public transport such as buses, trains, etc.
15. The Tutis Zille Sprint is not resistant to saltwater.
16. It is possible that black rubber tyres may leave permanent marks on floors such as synthetic laminate, parquet, linoleum and carpet (organic surface floors). If you have one of these floors, we would advise caution when using the product indoors.

SEAT-SPECIFIC

1. **WARNING:** The seat unit is not suitable for children under 6 months. The maximum weight for the child in the seat is 22 kg.

2. **WARNING:** FALL HAZARD – avoid serious injury from your child falling or sliding out. Always use the complete five-point restraint system.
3. **WARNING:** Always use the restraint system.
4. **WARNING:** Never let your child stand up in the seat. Be careful because children may stand up even when their seat belt is fastened.
5. The seat unit is not a replacement for a cot or bed. The seat is not intended for prolonged periods of sleeping. Should your child need a sleep place them in a suitable cot or bed.

RAIN COVER

1. Ensure that the rain cover does not come into contact with your child's face during use.
2. Check on your child frequently when using the rain cover.
3. Do not use the rain cover for a prolonged period of time.
4. Do not use the rain cover outside when it is not raining, and do not leave your child under the rain cover in sunny weather due to the risk of overheating.
5. Do not use the rain cover indoors.
6. Do not use the rain cover in gale-force winds (8 and above on the Beaufort scale).

If any of this instructions are insufficiently clear, please contact your Tutis sales representative for a detailed explanation.

In the box of the item you will find: x1 chassis with frame, x1 canopy, x1 leg cover, x1 shopping-bag, x2 front wheels, x2 rear wheels, x1 bumper bar.

ASSEMBLING THE PRODUCT

- 01** Place the chassis horizontally on an even surface and release the safety locks. Holding the chassis handle, lift it up so that the chassis unfolds and fixes fully in place.
- 02** To fit the front wheels of the pushchair, put its axle with the spiky end pointing towards the place of installation. Gently lift the wheels till you hear a "click".
- 03** To fit the rear wheels of the pushchair, put it on its axle. Press the wheels gently towards the chassis until they fix in place.
- 04** Zip the pushchair's shopping bag to the frame from both sides. Fasten the hooks on the side of the shopping bag to the corresponding places on the pushchair frame. Pass the side part of the shopping bag through the frame and fix it in place.
- 05** To fit the roof of the pushchair, mount it in the corresponding spaces on the frame until the roof fixes in place. Fasten the roof up to the sitting part with the zip.
- 06** Attach the protective handle by putting the fixing pins into the holders on both sides of the seat frame. Twist the belt with the buckle around the protective handle.

PRODUCT FEATURES

UNFOLDING/FOLDING UP THE CHASSIS

- 01** Lay the pushchair chassis horizontally on a flat surface, such as the floor, and remove the safety lock from the side of the chassis.
- 02** While holding the chassis handle, lift it upwards so that the chassis folds out and locks fully in place. Place the unfolded pushchair chassis on the floor.
- 03** To fold the chassis, make sure the front wheels of the pushchair are not blocked: they must rotate freely around a vertical axle. Apply the brakes and make sure the shopping bag is empty. Press the buttons on both sides of the frame at the same time, while also pulling the loops towards you.
- 04** While holding the chassis handle, gently push the frame down until it bends into a horizontal position. Make sure the safety lock on the side of the chassis is fitted. If you want the chassis to take up less space, remove the pushchair's rear wheels.

WARNING

Make sure your child is not in or near the pushchair when unfolding or folding it up.

To avoid injury, make sure that children are kept at a safe distance from the moving parts of the pushchair.

Always check that the chassis is locked before use.

REMOVING/FITTING AND LOCKING THE FRONT WHEELS

- 05** To fit the wheel, insert the axle with its pointed end into the hub. Gently lift the wheel up until you hear a "click".
- 06** To remove the wheel, press the remove button. Pull the wheel in the direction of the axle.
- 07** The pushchair chassis has two front-steered wheels with a rotation angle of 360 degrees. To lock the wheels, push the button down until it locks in place.

WARNING

Remove any dirt from the axles before fitting the wheels.

Check that the wheels are fitted correctly and cannot be detached from the shaft.

To avoid injury, make sure that children are kept at a safe distance from the moving parts of the pram.

Always check that the pushchair wheels are locked before use.

REMOVING/FITTING THE REAR WHEELS

- 08** To remove the wheel, press the lock button down slightly and pull it out of its installation position in the direction of the axle.
- 09** To fit the wheel, put it on the axle. Gently push the wheel towards the chassis until the wheel locks in place.

WARNING

Remove any dirt from the axles before fitting the wheels.

Check that the wheels are fitted correctly and cannot be detached from the axle.

To avoid injury, make sure that children are kept at a safe distance from the moving parts of the pram.

Always check that the pushchair wheels are locked before use.

PARKING

- 10** The pushchair has one-touch brakes that block the rear wheels. To apply the brakes, press the brake pedal with your foot. To release the brakes, lift the brake pedal with your foot.

WARNING

Never leave your child unattended in the pushchair.

The brake must always be applied when lifting a child in to or out a pushchair.

Do not park the pushchair on a slopes.

Always check that the brake is properly applied.

ADJUSTING THE HANDLE ANGLE

11 Press the round buttons on the sides of the handles at the same time. Adjust the handle to the height that is most comfortable for you.

WARNING

To avoid injury make sure that children are kept at a safe distance from any moving parts of the pushchair.

ADJUSTING OF THE CANOPY, FOOTREST AND BACKREST

12 The position of the roof can be adjusted. Carefully tilt the roof forwards or backwards into the desired position until it locks to place.

13 The backrest can be adjusted by pulling the handle and gently tilting the back area forwards or backwards into the desired position. The locking points of the back should lock automatically: make sure they are locked in place before using the pushchair.

14 The canopy has an extension. Unzip the zipper and gently tilt the roof downwards until it expands and locks into place.

15 The seat unit roof has a ventilation window that can be opened by folding the material attached with a magnet.

16 The leg cover is fitted on the front of the seat and secured with push buttons.

17 The height of the footrest can be adjusted by pressing the buttons on each side of the seat unit footrest at the same time and gently tilting it forwards or backwards into the desired position until it locks in place. The locking points of the footrest lock automatically: make sure they are fully locked before using the pushchair.

WARNING

Do not allow your child to stand on the footrest or seat unit.

FITTING/REMOVING THE BUMPER BAR

18 Secure the bumper bar by inserting the slider into the holders on both sides of the seat unit. Wrap the crotch restraint around the bumper bar and push both snap fasteners.

19 To lift your child into or out of the seat, unsnap the crotch restraint from the bumper bar. Push the red button and unslide one side of the bumper bar. Lift the handle to access the seat area.

WARNING

Always use the bumper bar.

Always check that the protective handle is fitted correctly before use.

Do not carry the pushchair by the protective handle.

To avoid injury, make sure that children are kept at a safe distance from any moving parts of the pushchair.

FASTENING/UNFASTENING THE SAFETY BELTS OF THE SEAT UNIT

20 The seat unit is equipped with a five-point harness system. Place one part of the buckle on top of the other and insert both sides into the central part until it clicks into place.

Tighten the belt until your child is firmly secured. To release the buckle, press the button.

WARNING

Always use the restraint system.

Make sure that your child is firmly secured.

ADJUSTING THE SAFETY BELTS ON THE SEAT UNIT

21 The shoulder straps can be attached in two different positions on the backrest depending on your child's height.

22 Before changing position, release the push button on the cushion. Twist the buckle and pass it through the hole in the backrest and the cushion.

23 Pass the strap with the buckle through the cushion and the backrest and into the desired position. Do the same for the other strap.

WARNING

Make sure that all the locking points are correctly fastened and that the seat belts are attached to the pram.

USING THE RAIN COVER AND MOSQUITO NET

24 The pushchair has a cover that fits its canopy and seat. Place the guard on the pushchair's seat unit so that the window would be in front of your child.

25 The pushchair has a mosquito net that fits its seat unit. Place it over the seat and canopy.

PRODUCT MAINTENANCE

SEAT

Never leave the pushchair in direct sunlight for an extended period of time. Prolonged exposure to sunlight may result in discoloration of the pushchair.

- Always use the protective cover if it rains or snows.
- To prevent condensation and mould, do not store the pushchair in a humid room or in any room with exposed to fluctuations in temperature.

FABRIC CARE:

- Use a damp cloth to clean fabrics including the handles of the chassis, seat unit and carrycot.
- Use a clothes steamer to iron fabrics.

CHASSIS:

- If the chassis gets wet, wipe it with a dry cloth and dry it. Dry it naturally, away from a naked flame or other sources of heat. Make sure the pushchair is completely dry before storing it away.
- If you are using the pushchair near the sea or on a gritted road, wash the chassis in clean running (tap) water and dry it to prevent rust.
- Use the silicone lubricant provided to lubricate moving parts.
- Check regularly for loose rivets, bolts or nuts.
- The allowable deviation of a new pushchair from a straight trajectory on a smooth track is 10 centimetres for every metre.

WHEELS:

- The pushchair can be supplied with inflatable wheels. For these wheels, the maximum pressure is 0.8 bar (115 psi). A soft tyre provides better cushioning over rough terrain. Pressures higher than 0.8 bar (115 psi) can deform the rim or cause the tube to explode.
- Lubricate the rear and front axles before using the pushchair for the first time.
- Exposure to water, salt, sand, dirt or dust can cause the axles to corrode. Lubricate the axles with grease at least once a month. Clean the axles with a disposable cloth before lubricating them.
- Apply a thin layer of lubricant to the rubber at the top of the front fork if you notice that the pushchair has lost manoeuvrability.
- The permissible wheel stroke of a new pushchair is +/- 1mm.

BRAKE SYSTEM:

- The brake system consists of moving parts and requires regular maintenance.
- Never use force to apply or release the brakes.
- Sand, dust or dirt can interfere with the brake system. If you notice that the system is not working or that it is working harder than usual, rinse with a lubricant spray or jet of water before brushing and lubricating the working surfaces of the brake pedal.

STORAGE AND TRANSPORT:

- Do not overload the product or crush the product with the lid of your car boot, as prolonged loading can permanently deform parts of the product, in particular the wheels and the sunshade of the carrycot and seat unit.
- We recommend removing the rear and front wheels from the chassis if storing it for an extended period.

LIMITED WARRANTY

1. Your Tutus pushchair is covered by a 24-month limited warranty for the original pushchair, from the date of purchase, against defects in manufacturing or material, based on normal use and as long as these instructions have been followed.
2. This limited warranty is valid only in the original country of purchase.
3. The manufacturer's warranty provides a right to repair unless Tutus believes that the product needs to be replaced or returned.
4. Tutus reserves the right to stop manufacturing a particular model, colour, fabric or accessory, meaning that it will replace a faulty part with a similar product, colour or fabric during the manufacturer's warranty period.
5. To claim under this manufacturer's warranty you must provide Tutus with the following:
 - a copy of your dated sales receipt,
 - a clear description of your complaint and
 - the faulty product and/or photographs of the faulty part or product.
6. This warranty does not exclude, limit or otherwise affect any statutory consumer rights, including claims in tort or claims with respect to a breach of contract, which the buyer may have against the seller or manufacturer of the product.
7. Tutus reserves the right to determine if the terms and conditions of the limited warranty have been met.

The following is NOT COVERED under this limited warranty:

1. Damage due to normal wear and tear from everyday use, negligence or accident.
2. Damage caused by misuse or poor maintenance. Please refer to this manual for guidance on correct use and maintenance.
3. Damage caused by corrosion, mould or rust due to a lack of maintenance or service.

4. Damage caused by airline handling or shipping.
5. Damage to the tyres.
6. Damage caused by intense exposure to the sun, sweat, detergents, storage in damp conditions or frequent washing.
7. Issues caused by minor variations in materials (e.g. discolouration between parts).
8. Damage caused by repair or modifications by a third party.
9. Consequential damage, for example injury or damage inflicted on any persons or other objects.
10. Incorrect fitting or installation of third-party parts that are incompatible with the product.
11. Inadvertent or unintentional damage, abnormal use or insufficient care.
12. Improper storage / or care of the product.
13. Dissatisfaction on the part of the customer with the product in terms of its fit, weight, functionality, colour or design.

Important:

The manufacturer's warranty period for this product is 24 months from the date of purchase indicated on the sales receipt. Save the sales receipt in a safe place and make a copy of it. If you submit a claim under this manufacturer's warranty, you must first contact your retailer. If your retailer is unable to repair the defect or if you purchased the product directly from Tututis, you can contact Tututis by sending an e-mail to support@tututis.lt or calling +370 372 67259. You must also contact your retailer with any complaints that arise outside the manufacturer's warranty period.

Customer service:

If you have any questions regarding your Tutis product, please contact Customer Service
 Telephone: +370 372 67259, +370 656 05846
 E-mail: support@tututis.lt

No.	Start of repair works	Done works	The warranty is extended until	Date, signature

The manufacturer gives the warranty until:	
--	--

Date of sale
Seller
Purchaser
Purchaser's signature

UAB TUTUTIS
 Raudondvario rd. 127, Kaunas, Lithuania.
 Tel./fax +370 37 26 72 59
 Mobile +370 652 27756
 E-mail: tututis@tututis.lt

