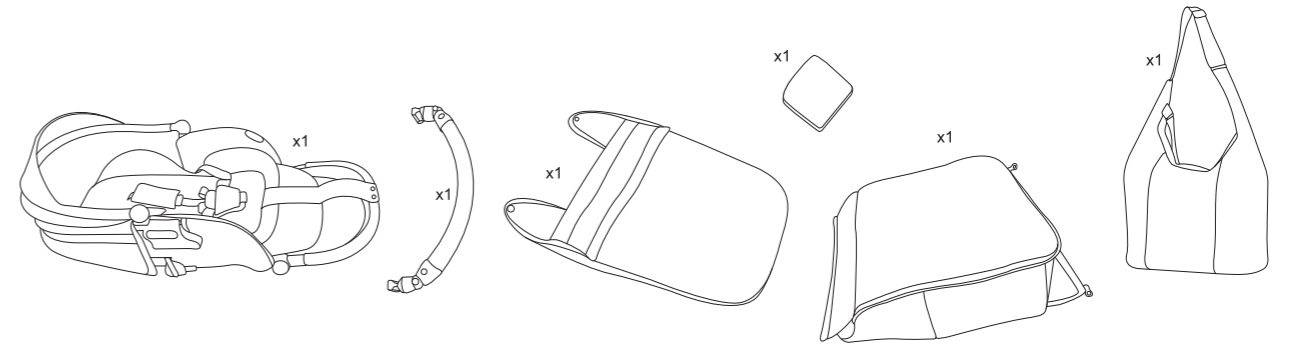
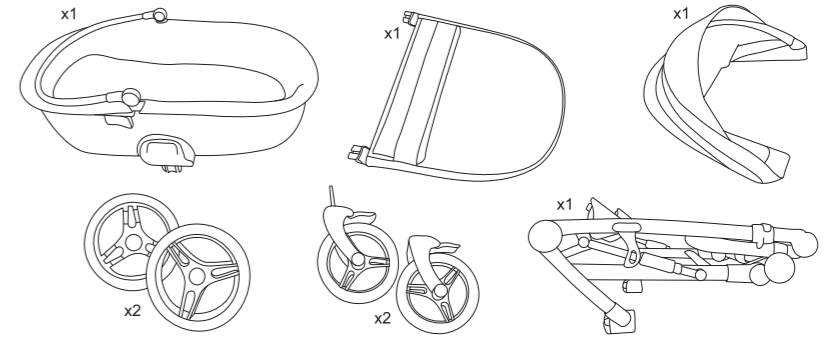


ZILLE

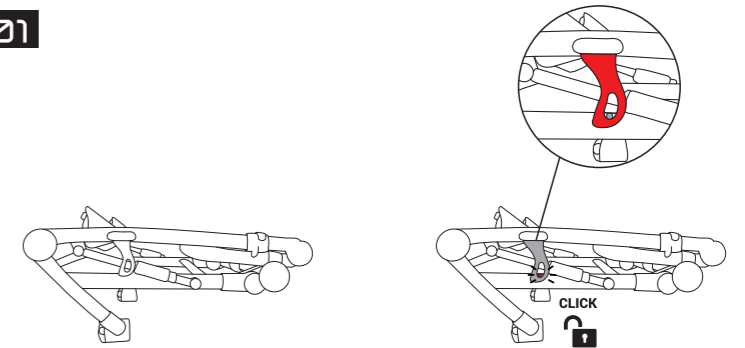
USER GUIDE

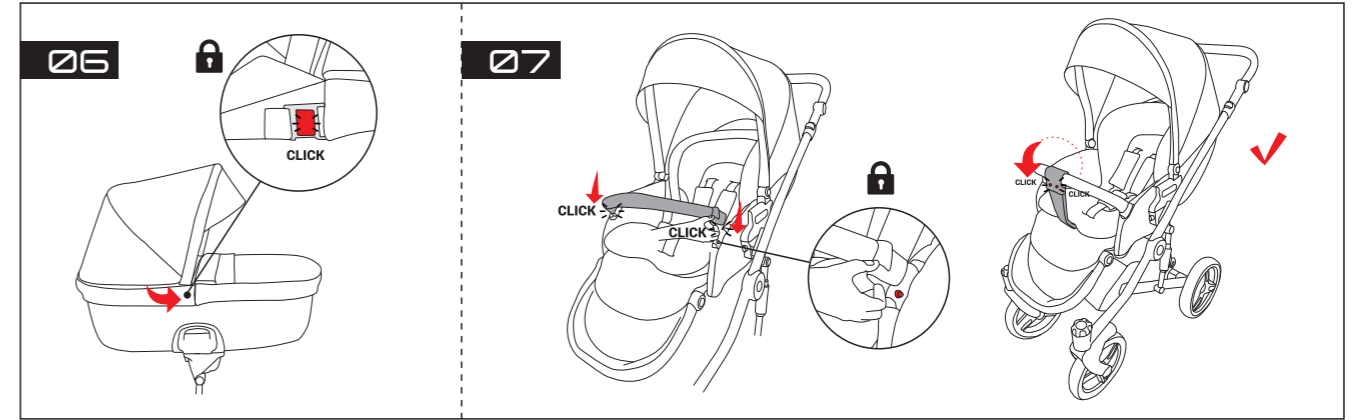
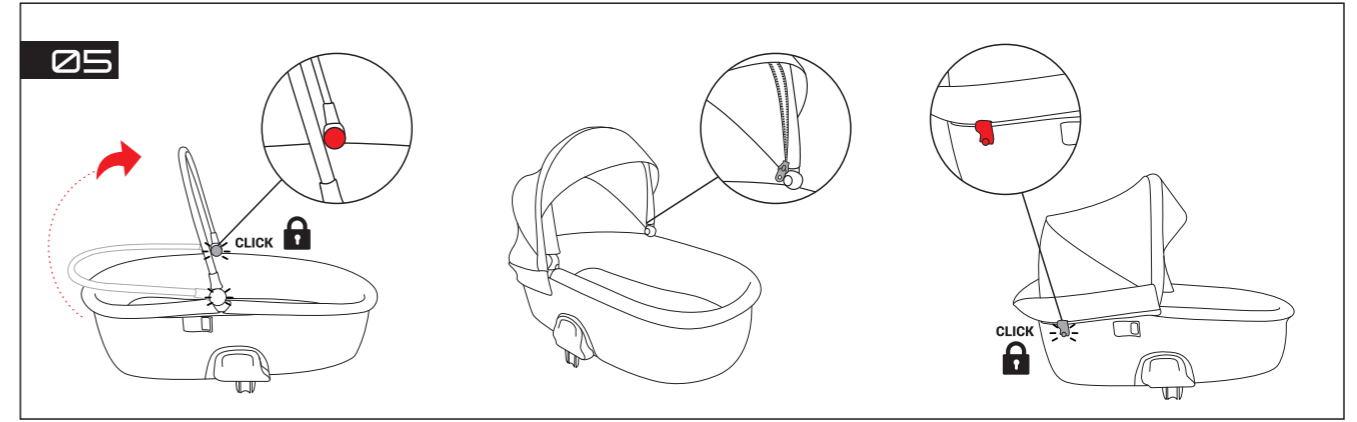
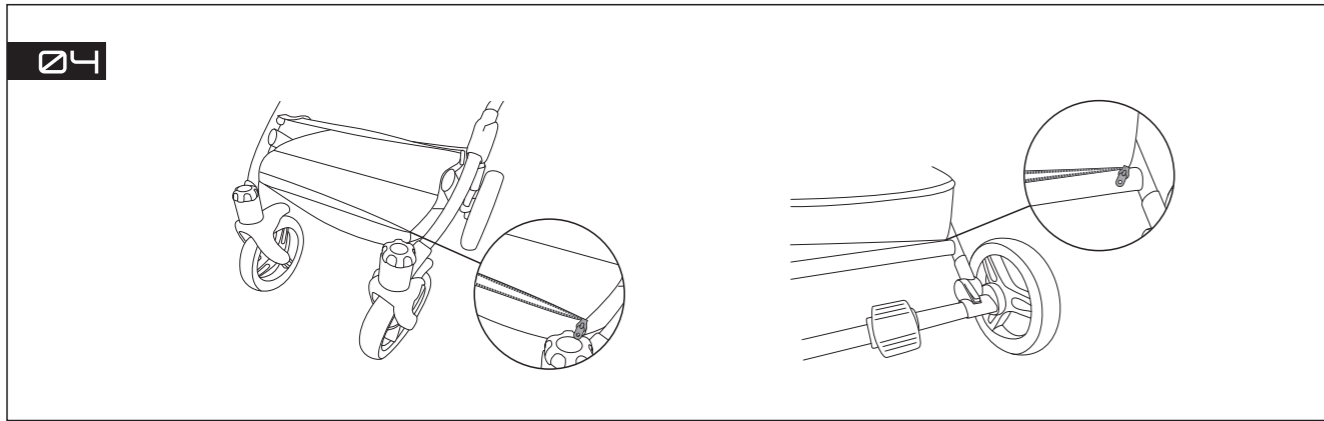
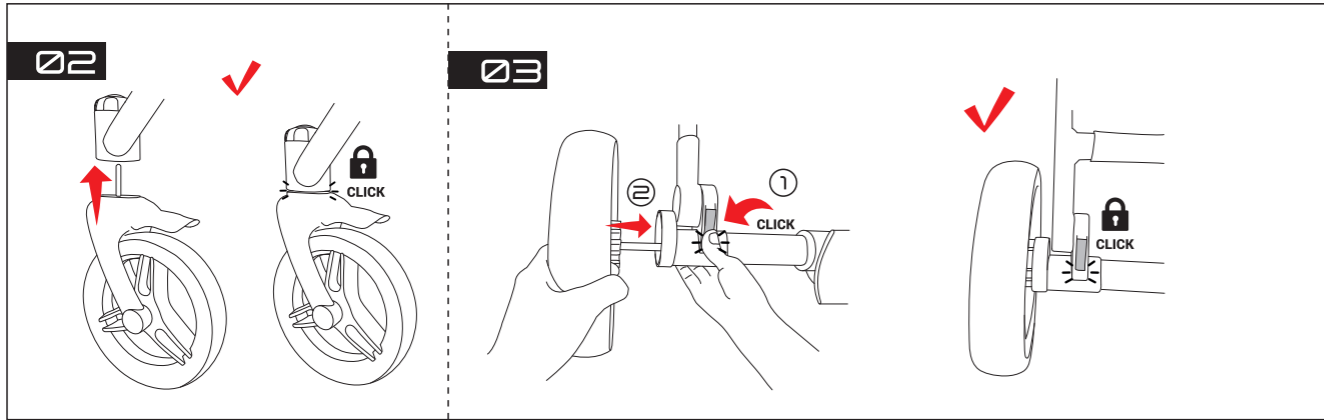
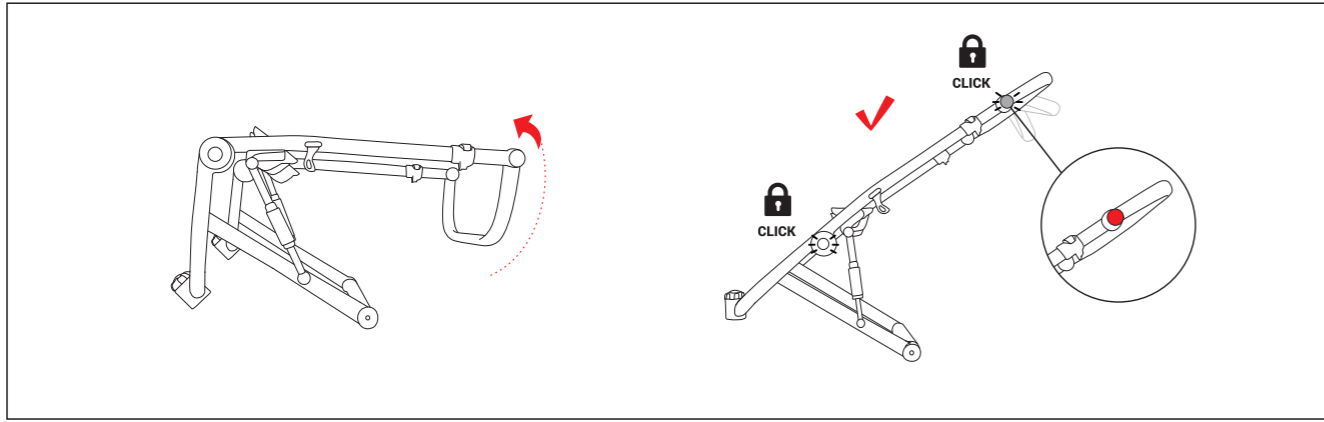
IN THE BOX



PRODUCT ASSEMBLAGE

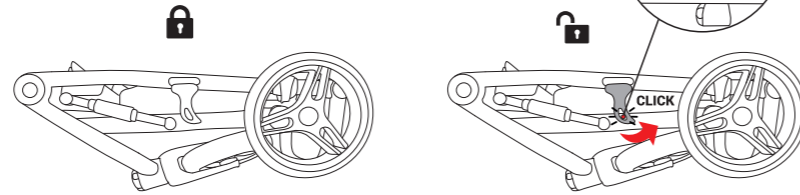
01



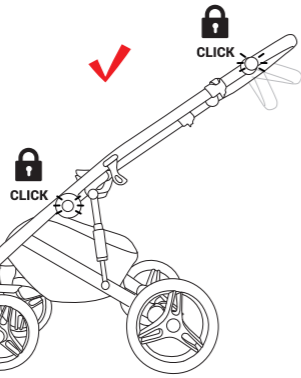
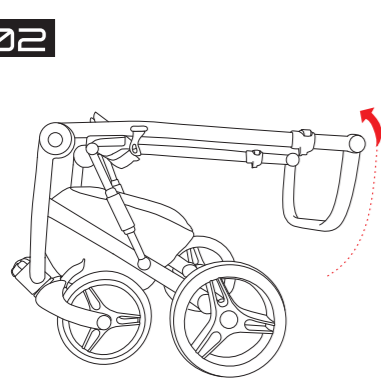


UNFOLDING/ FOLDING
THE CHASSIS

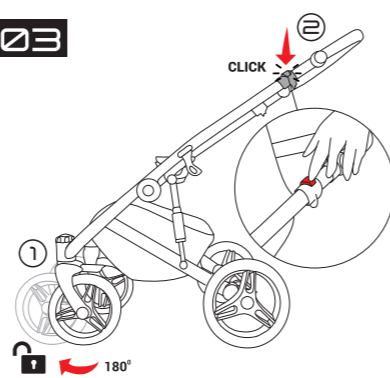
01



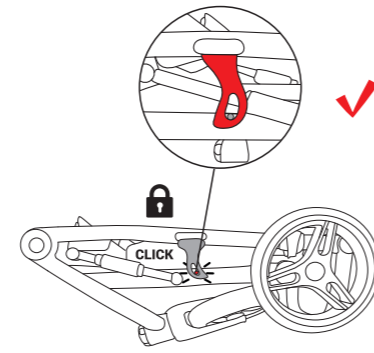
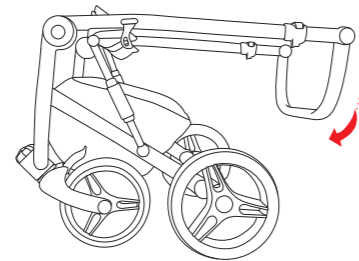
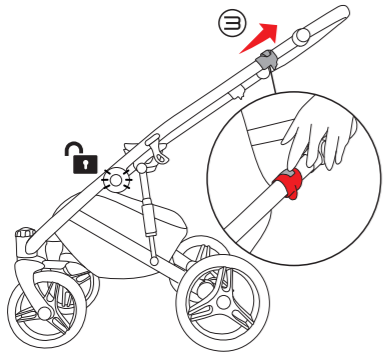
02



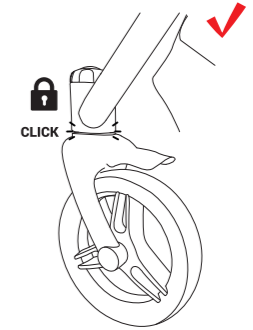
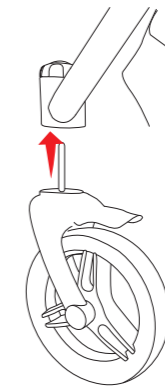
03



04

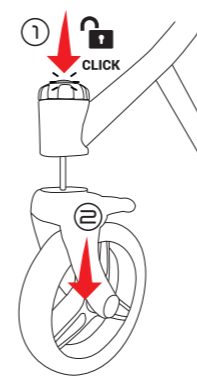


05

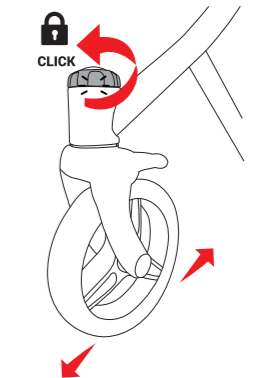
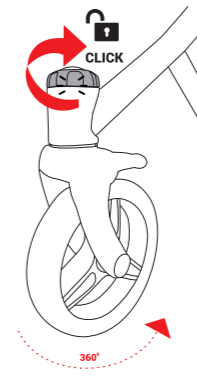


REMOVING/ MOUNTING
AND LOCKING THE FRONT
WHEELS

06

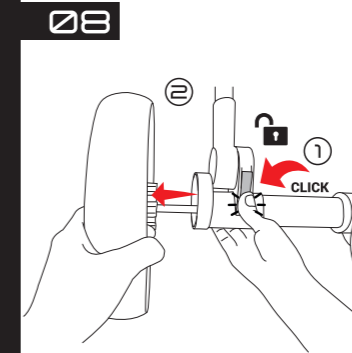


07

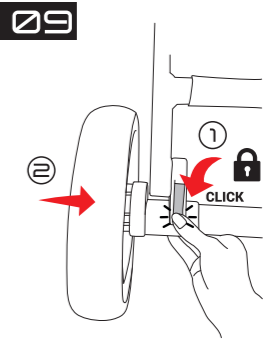


REMOVING/ MOUNTING
THE REAR WHEELS

08

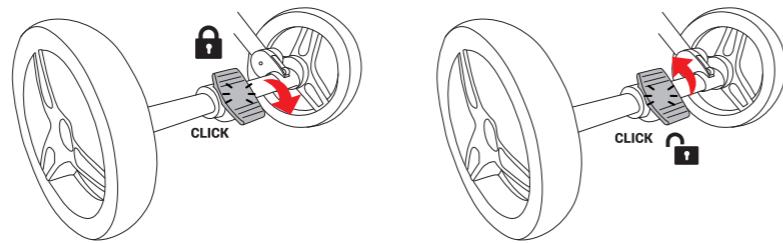


09



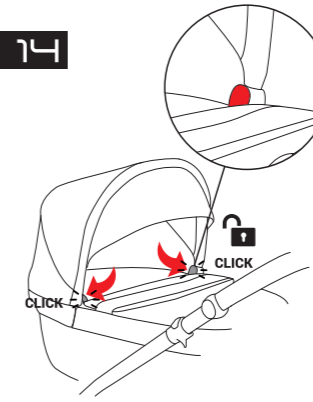
BRAKES

10

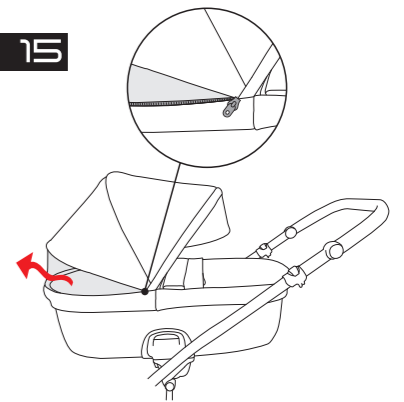


ADJUSTMENT OF THE CARRYCOT ROOF AND LEG COVER

14

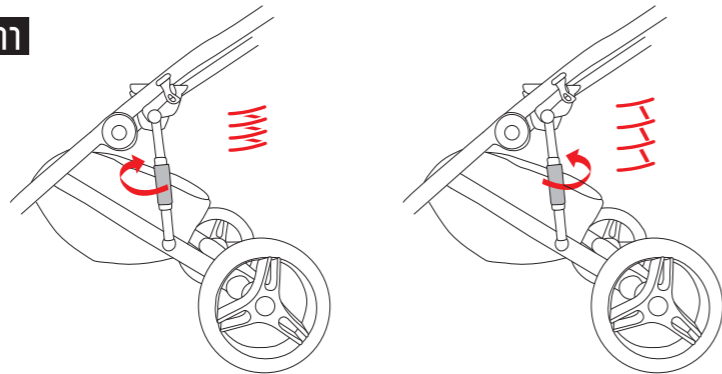


15

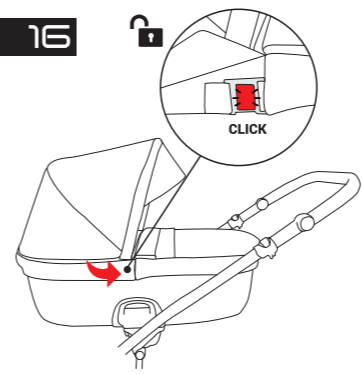


SIDE CUSHIONING ADJUSTMENT

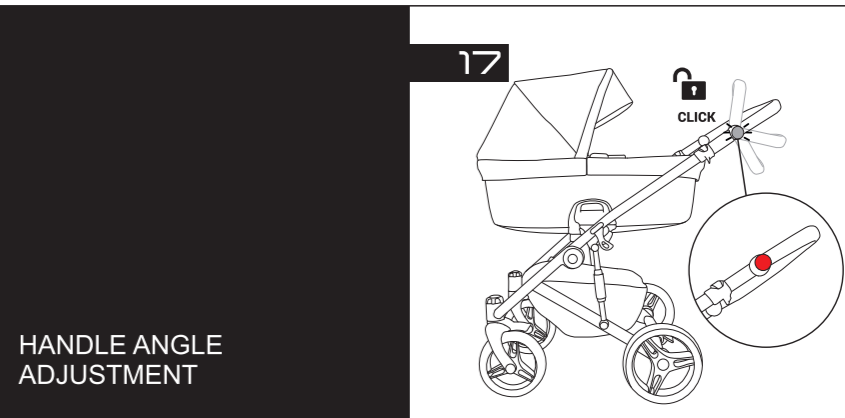
11



16



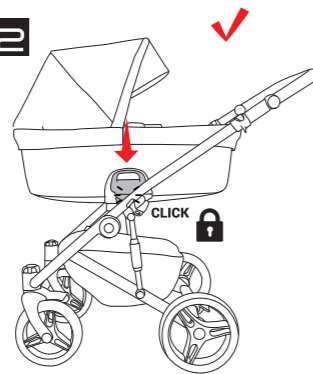
17



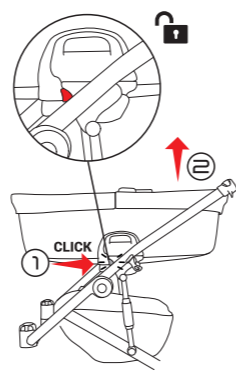
HANDLE ANGLE ADJUSTMENT

PLACEMENT/ REMOVAL OF THE CARRYCOT

12

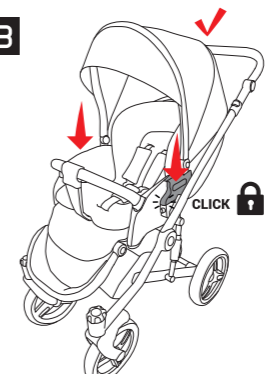


13

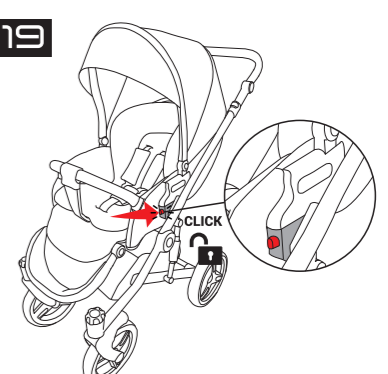


FITTING/ REMOVING THE SEAT UNIT

18

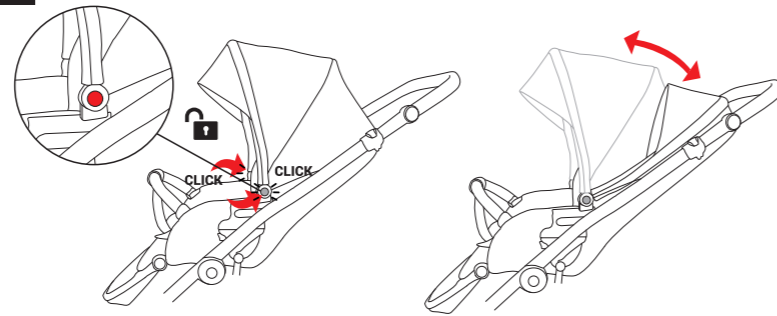


19

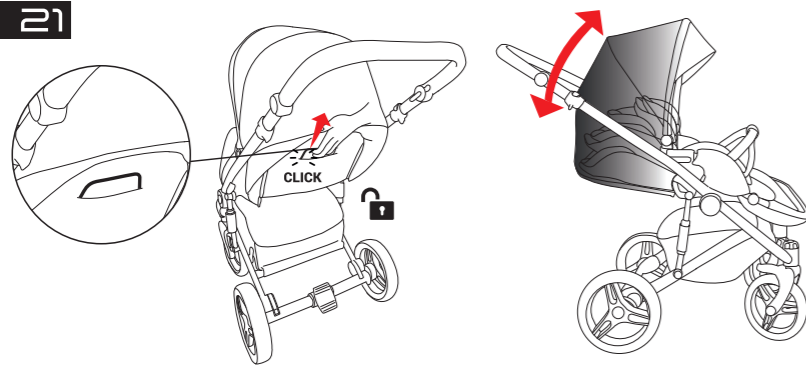


ADJUSTMENT OF
THE SEAT UNIT ROOF,
FOOTREST AND LEG
COVER

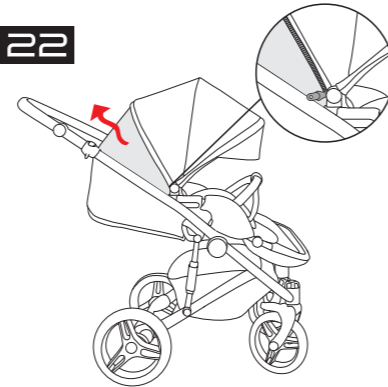
20



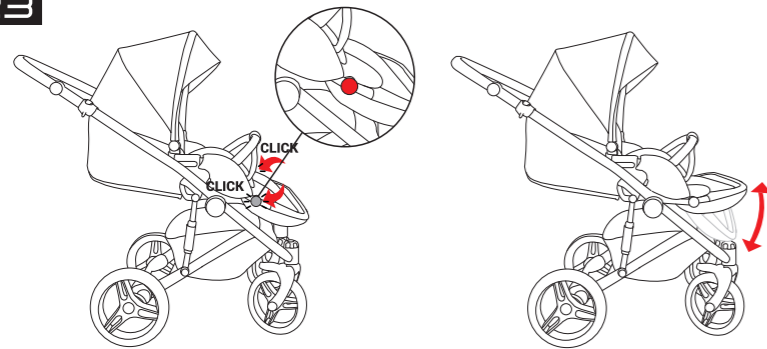
21



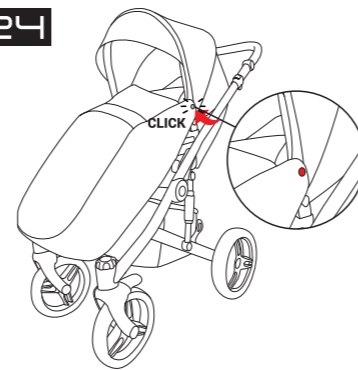
22



23

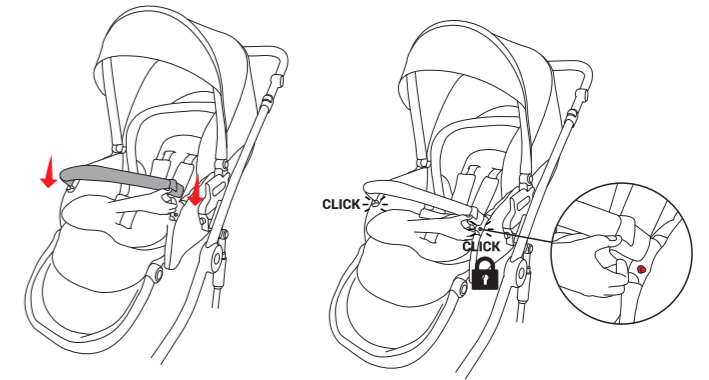


24



FITTING/ REMOVING
THE PROTECTIVE HANDLE
OF THE SEAT UNIT

25

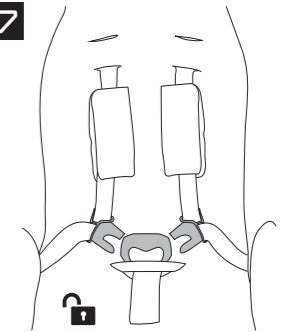


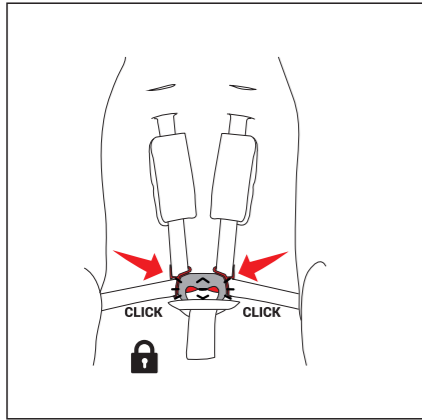
26



27

FASTENING/ UNFASTENING
OF THE SAFETY BELTS
OF THE SEAT UNIT





28

ADJUSTMENT OF THE SAFETY BELTS OF THE SEAT UNIT

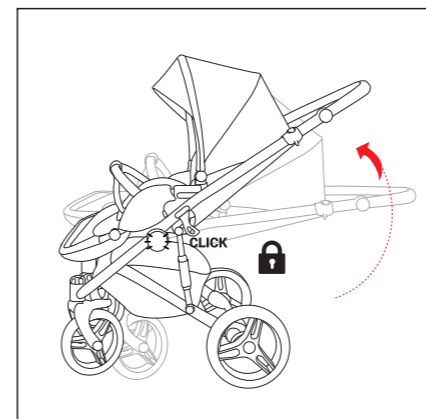
29

30

31

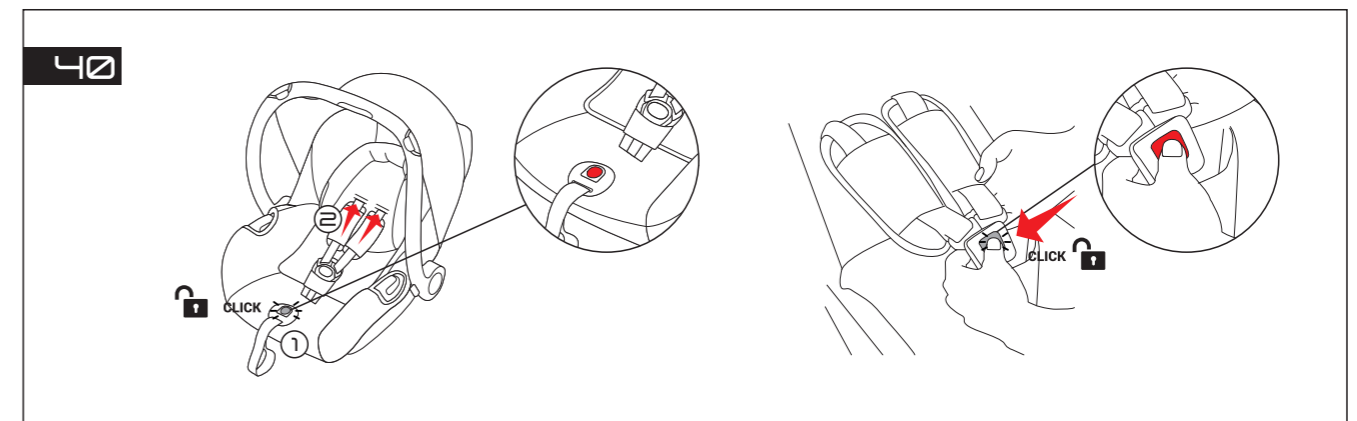
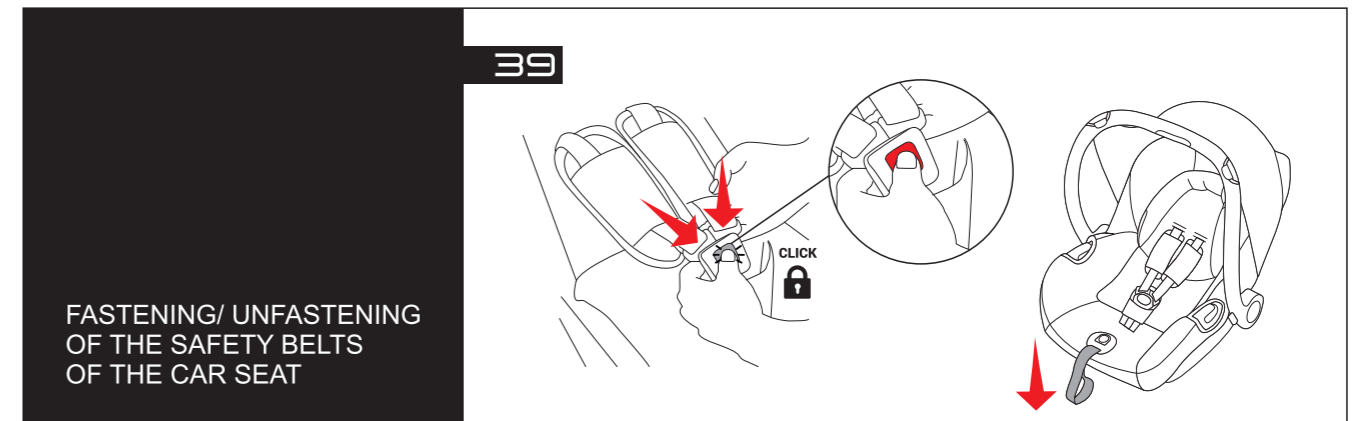
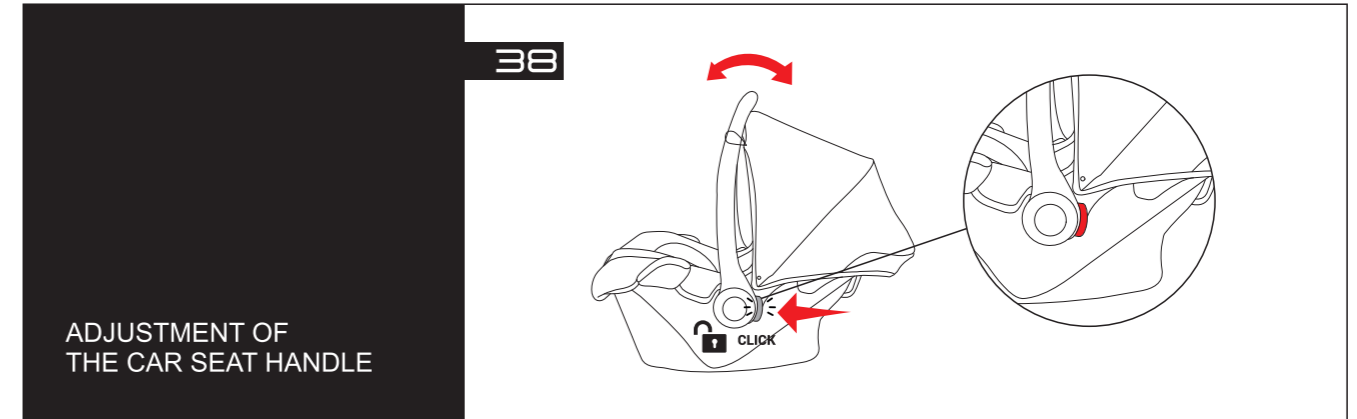
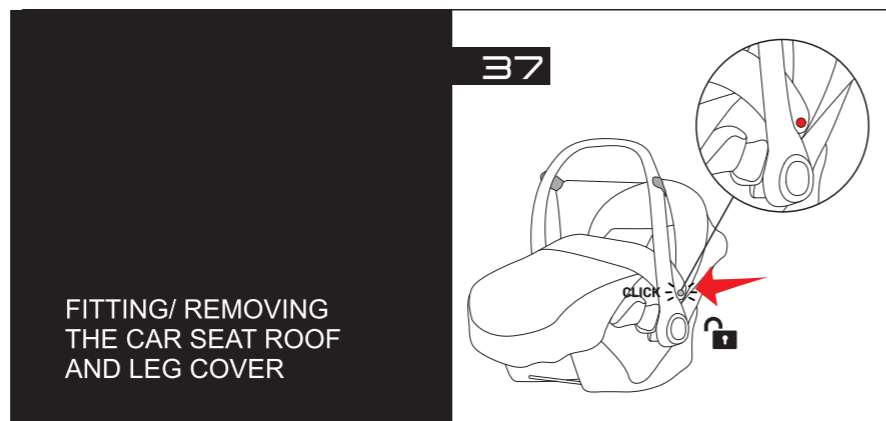
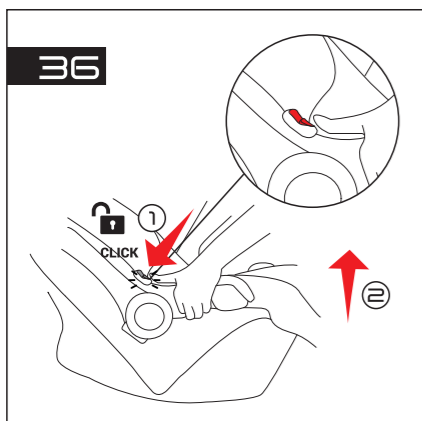
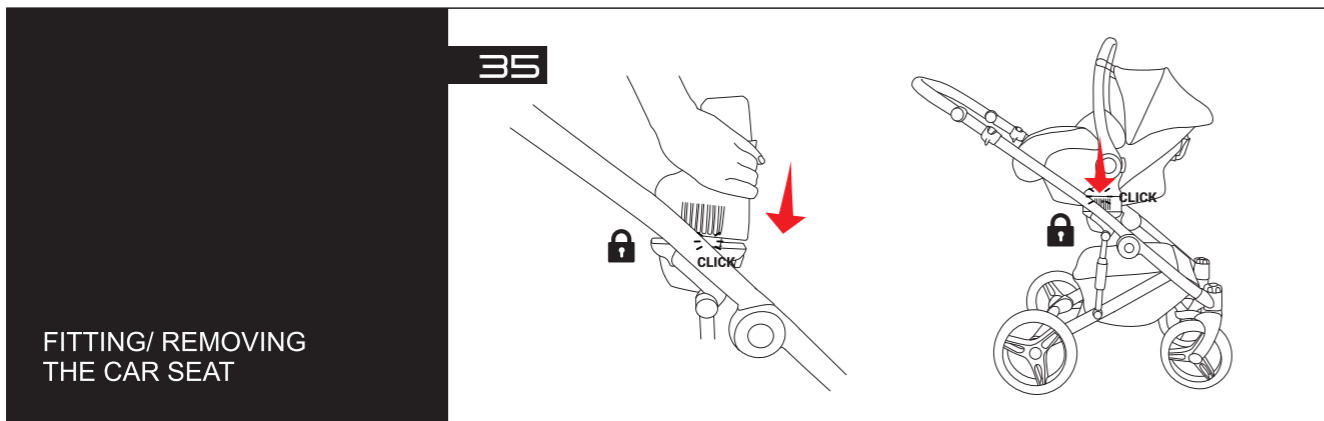
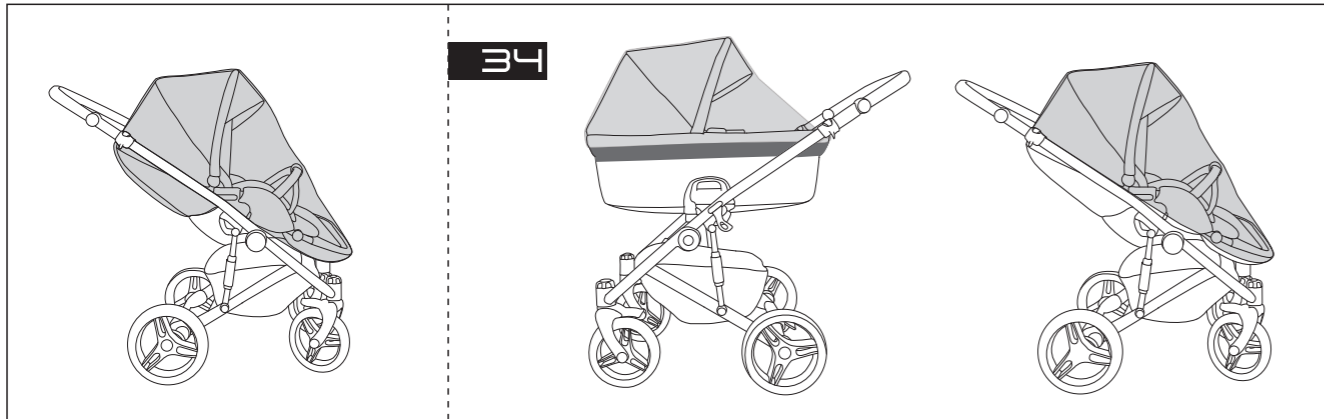
FOLDING THE SEAT UNIT TOGETHER WITH THE CHASSIS

32



33

RAIN COVER AND MOSQUITO NET



DEAR PARENTS!

Thank you so much for purchasing a TUTIS stroller!

We have created this wonderful stroller in accordance with EU standards. We are proud to present a solution that will provide your child with an exclusive level of comfort while being practical for you to use. Please read the instructions carefully and learn about all the possibilities that your stroller offers. This will help to ensure the safety and comfort of your baby.

We hope that your TUTIS stroller will be easy for your family to use and that it will play its part in many pleasant moments in your life!

With best wishes,
TUTUTIS

USEFUL SAFETY INFORMATION AND WARNINGS

IMPORTANT - failure to follow all warnings and instructions may result in serious injury or death. For your child's safety, read this owner's manual before using this product. This product has been created in accordance with to EN1888-1:2018 Safety requirements and test methods for pushchairs and prams.

WARNING:

- Important – read carefully and keep for future reference
- Never leave the child unattended
- Do not let the child play with this product
- This product is not suitable for running or skating.

BEFORE USE WARNING:

1. The carry handle and the bottom of the bassinet/carrycot should be inspected regularly for signs of damage and wear.
2. Ensure that all the locking devices are engaged before use.
3. To avoid injury ensure that the child is kept away when unfolding and folding this product.
4. WARNING: Check that the pram body or seat unit or car seat attachment devices are correctly engaged before use.
5. WARNING: Ensure that all the locking devices are engaged before use and always apply the brake when loading or unloading your child. Audible „click“ must be heard to confirm that all locks are engaged.

6. Before carrying or lifting the bassinet/carrycot make sure that the carry handle is in vertical position.
7. Before each use ensure that the harness is working properly.
8. Parking device shall be engaged when placing and removing the children.
9. Do not use the Tutis Zille if any part is broken, torn or missing. You should ensure that any damaged or worn parts are repaired immediately.

USAGE RESTRICTIONS

THE PRODUCT IN GENERAL

1. The Tutis Zille is suitable for children from 0 to 36 months. The maximum child weight is 15 kg.
2. The under-seat bag can hold a maximum of 2 kg.
3. The bag on the handlebar can hold a maximum of 2 kg.
4. Exceeding any load recommended by Tutis can give rise to unstable hazardous conditions.
5. Any load attached to the handlebar, seat or side of the stroller will affect stability.
6. Take your child out of the Tutis Zille when going up or down stairs or on steep or unstable ground. Also take extra care when mounting or descending a kerb or on other uneven surfaces. Do not take your stroller on escalators.
7. Take your child out of the Tutis Zille before folding up the frame.
8. Always apply the brake when the Tutis Zille is not in motion.
9. The Tutis Zille should only be used for one child at a time.
10. The Tutis Zille carrycot and seat unit should only be used with the Tutis Zille chassis. Do not use Tutis Zille parts, components or accessories with any non-approved pushchair or any other Tutis product.
11. Only use genuine Tutis replacement parts and Tutis accessories or products approved by Tutis in or on the Tutis Zille. Using products not approved by Tutis is unsafe.
12. Strings can cause strangulation! Do not place items with a string, such as hood strings or dummy cords, around your child's neck. Do not suspend strings over a seat unit/carrycot or cradle or attach strings to toys.
13. Do not use the Tutis Zille or any of its components near a naked flame or other sources of heat. Avoid exposing the Tutis Zille to extreme temperatures.
14. Use extra caution when using the stroller on or near public transport such as buses, trains, etc.
15. The Tutis Zille is not resistant to saltwater.

16. It is possible that on floors such as synthetic laminates, parquet, linoleum and carpet (organic surface floors), rubber black tires may leave permanent marks. Should you have a floor as mentioned above we recommend to be careful with indoor usage.

CARRYCOT-SPECIFIC

1. The maximum weight for a child in the bassinet/carrycot is 9 kg (20 lbs).
2. **WARNING:** This product is only suitable for a child who cannot sit up unaided.
3. **WARNING:** FALL HAZARD – to help prevent falls, do not use this product when your child begins to push themselves up on their hands and knees or has reached 9 kg (20 lbs), whichever happens first.
4. Your child's head in the bassinet/carrycot should never be lower than their body.
5. **WARNING:** SUFFOCATION HAZARD –only use the mattress provided by Tututis in the carrycot. NEVER add a pillow, comforter or second mattress for padding.

USING THE CARRYCOT OFF THE CHASSIS

1. **WARNING:** Do not use the bassinet/carrycot off the chassis once your child can sit up unaided.
2. The maximum weight for a child in the bassinet/carrycot when it is being used off the chassis is 9 kg (20 lbs).
3. **WARNING:** FALL HAZARD – the movement of your child can cause the carrier to move too. NEVER place the carrier on beds, sofas or other soft surfaces. NEVER place the carrier on countertops, tables or any other elevated surface. Only use it on a firm, horizontal, level and dry surface.
4. NEVER use this carrier to transport a child in a motor vehicle.
5. **WARNING:** Never use the bassinet/carrycot on a stand.
6. **WARNING:** Never let other children play unattended near the carrycot.
7. **WARNING:** Never use the carrycot if any part of it is broken, torn or missing.
8. The reclining backrest should be moved into its lowest position before lifting or carrying the carrycot.

SEAT-SPECIFIC

1. **WARNING:** The seat unit is not suitable for children under 6 months. The maximum weight for the child in the seat is 15 kg (33lbs).
2. **WARNING:** FALL HAZARD – avoid serious injury from your child falling or sliding out. Always use the complete five-point restraint system.
3. **WARNING:** Always use the restraint system.

4. **WARNING:** Never let your child stand up in the seat. Be careful because children may stand up even when their seat belt is fastened.
5. The seat unit is not a replacement for a cot or bed. The seat is not intended for prolonged periods of sleeping. Should your child need a sleep place them in a suitable cot or bed.
6. This seat is not designed to be used off the chassis.

RAIN COVER

1. Ensure that the rain cover does not come into contact with your child's face during use.
2. Check on your child frequently when using the rain cover.
3. Do not use the rain cover for a prolonged period of time.
4. Do not use the rain cover outside when it is not raining, and do not leave your child under the rain cover in sunny weather due to the risk of overheating.
5. Do not use the rain cover indoors.
6. Do not use the rain cover in gale-force winds (8 and above on the Beaufort scale).

If any of this instructions are insufficiently clear, please contact your Tutis sales representative for a detailed explanation.

In the box the product came in, you will find: x1 cradle, x1 cradle leg cover, x1 cradle roof, x2 front wheels, x2 rear wheels, x1 frame, x1 seat unit, x1 bumper bar, x1 leg cover of the seat unit, x1 protection from rain, x1 shopping bag, x1 bag.

ASSEMBLING THE PRODUCT

- 01** Place the chassis horizontally on an even surface or the floor and remove the protection from the side of the chassis. Holding the chassis handle, lift it up so that the chassis unfolds and fixes fully in place. Place the unfolded chassis on the floor.
- 02** To fit the front wheels of the pushchair, put its axle with the spiky end pointing towards the place of installation. Gently lift the wheels till you hear a "click".
- 03** To fit the rear wheels of the pushchair, put it on its axle. Press the wheels gently towards the chassis until they fix in place.
- 04** Zip the pushchair's shopping bag to the frame from both sides.
- 05** To fit the roof of the cradle, lift the roof hoop on the cradle, turning it through 90 degrees until it fixes in place. Put the roof on the roof hoop and zip up the zipper inside the roof. Attach the sides of the roof of the cradle to the buttons near the sides of the cradle.
- 06** The leg cover for the pushchair cradle is attached in the front of the cradle and is fixed in place on both sides of the cradle using the buttons near the roof.
- 07** Attach the protective handle by putting the fixing pins into the holders on both sides of the seat frame. Twist the belt with the buckle around the protective handle.

PRODUCT FEATURES

UNFOLDING/FOLDING UP THE CHASSIS

- 01** Lay the stroller chassis horizontally on a flat surface, such as the floor, and remove the safety lock from the side of the chassis.
- 02** While holding the chassis handle, lift it upwards so that the chassis folds out and locks fully. Place the unfolded stroller chassis on the floor.
- 03** To fold the chassis, make sure the front wheels of the stroller are not blocked: they must rotate freely around a vertical axle. Apply the brakes and make sure the shopping bag is empty. Press the buttons on both sides of the frame at the same time, while also pulling the loops towards you.
- 04** While holding the chassis handle, gently push the frame down until it bends in to a horizontal position. Make sure the safety lock on the side of the chassis is fitted. If you want the chassis to take up less space, remove the stroller's rear wheels.

WARNING

Make sure your child is not in or near the stroller when unfolding or folding it up.

To avoid injury, make sure that children are kept at a safe distance from the moving parts of the stroller.

Always check that the chassis is locked before use.

REMOVING/FITTING AND LOCKING THE FRONT WHEELS

- 05** To fit the wheel, insert the axle with its pointed end into the hub. Gently lift the wheel up until you hear a "click".
- 06** To remove the wheel, press the remove button. Pull the wheel in the direction of the axle.
- 07** The stroller chassis has two front-steered wheels with a rotation angle of 360 degrees. To lock the wheels, push the button down until it locks in place.

WARNING

Remove any dirt from the axles before fitting the wheels.

Check that the wheels are fitted correctly and cannot be detached from the shaft.

To avoid injury, make sure that children are kept at a safe distance from the moving parts of the stroller.

Always check that the stroller wheels are locked before use.

REMOVING/FITTING THE REAR WHEELS

- 08** To remove the wheel, press the lock button down slightly and pull it out of its installation position in the direction of the axle.
- 09** To fit the wheel, put it on the axle. Gently push the wheel towards the chassis until the wheel locks in place.

WARNING

Remove any dirt from the axles before fitting the wheels.

Check that the wheels are fitted correctly and cannot be detached from the axle.

To avoid injury, make sure that children are kept at a safe distance from the moving parts of the stroller.

Always check that the stroller wheels are locked before use.

PARKING

10

The stroller has one-touch brakes that block the rear wheels. To apply the brakes, press the brake pedal with your foot. To release the brakes, lift the brake pedal with your foot.

WARNING

Never leave your child unattended in the stroller.

The brake must always be applied when lifting a child in to or out a stroller.

Do not park the stroller on a slopes.

Always check that the brake is properly applied.

ADJUSTING THE SIDE CUSHIONING

11

The strength of the side cushioning system can be adjusted by turning the cushion ring inside the frame from one side to the other.

FITTING/REMOVING THE CARRYCOT

12

Apply the brake. Insert the carrycot locking points into the brackets inside the chassis. The locking points of the pushchair body should lock automatically: make sure they are locked in place before using the pushchair.

13

Apply the brake. To remove the pushchair carrycot, press the red buttons on the chassis brackets one by one. Make sure the carrycot roof is pointing at a 90-degree angle. Lift the carrycot by grabbing the handle on the carrycot roof.

WARNING

Do not place any other mattresses in the carrycot. Only use the original TUTIS mattress supplied with the pushchair.

Always check that the carrycot is properly secured on both sides.

Only ever lift the carrycot by its handle.

Do not leave the carrycot near stairs, tables or any other places where it may fall.

Never use the carrycot as a bed for your child.

ADJUSTING THE CARRYCOT ROOF AND LEG COVER

14

The position of the roof can be adjusted by pressing all the red buttons inside the carrycot at the same time. Carefully tilt the roof forwards or backwards to the desired position until it locks in place.

15

The carrycot roof has a vent window with a mesh to provide protection against insects. You can find it by unlocking the zipper at the bottom of the carrycot roof and tilting the roof down. To return it to its initial position, press all the red buttons inside the carrycot at the same time and carefully tilt the roof forwards or backwards to the desired position until it locks in place.

16

The pushchair body has a leg cover that can be fitted or removed at the front of the carrycot and locked on both sides using buttons near the roof. The carrycot leg cover has a windproof wall.

HANDLE ANGLE ADJUSTMENT

17

Press the round buttons on the sides of the handles at the same time. Adjust the handle to the height that is most comfortable for you.

WARNING

To avoid injury make sure that children are kept at a safe distance from any moving parts of the stroller.

FITTING / REMOVING THE SEAT UNIT

18

Apply the brake. Insert the seat unit locking points into the brackets inside the chassis. The locking points of the pushchair body should lock automatically: make sure they are locked in place before using the pushchair.

19

Apply the brake. To remove the seat unit, press the red buttons on the chassis brackets one by one and lift the seat unit out of the chassis using the carrying handle. The seat unit can be mounted on the chassis to accommodate the different directions of movement.

WARNING

Never leave your child in the seat while removing it.

Always check that the seat unit is properly secured to the chassis before using the pushchair.

To avoid injury, make sure that children are kept a safe distance away from any moving parts of the pushchair.

ADJUSTING THE SEAT UNIT CANOPY, FOOTREST AND LEG COVER

20

The position of the roof can be adjusted. Carefully tilt the roof forwards or backwards into the desired position until it locks to place.

21

The backrest can be adjusted by pulling the handle and gently tilting the back area forwards or backwards into the desired position. The locking points of the back should lock automatically: make sure they are locked in place before using the pushchair.

21 The canopy has an extension. Unzip the zipper and gently tilt the roof downwards until it expands and locks into place.

22 The seat unit roof has a vent window and an additional material window that can be opened by unzipping and gently tilting the roof downwards until it expands and locks in place.

23 The leg cover is fitted on the front of the seat and secured with push buttons.

The height of the footrest can be adjusted by pressing the buttons on each side of the seat unit footrest at the same time and gently tilting it forwards or backwards into the desired position until it locks in place.

24 The locking points of the footrest lock automatically: make sure they are fully locked before using the pushchair.

WARNING

Do not allow your child to stand on the footrest or seat unit.

FITTING/REMOVING THE PROTECTIVE HANDLE OF THE SEAT UNIT

25 The protective handle is secured by inserting the locking pins into the holders on either side of the seat unit frame. Wrap the belt with a buckle around the protective handle.

26 To lift your child in or out, unpin the seat belt from the handle and press one of the buttons at the bottom of the locking pin. Gently pull the handle and open it to the side.

WARNING

When using the seat unit, the protective handle must always be fitted.

Always check that the protective handle is mounted correctly before use.

Do not carry the pushchair by its protective handle.

To avoid injury, make sure that children are kept at a safe distance from any moving parts of the pushchair.

FASTENING/UNFASTENING OF THE SAFETY BELTS OF THE SEAT UNIT

27 The seat unit is equipped with a five-point harness system. Place one part of the buckle on top of the other and insert both sides into the central part until it clicks into place.

Tighten the belt until your child is firmly secured. To release the buckle, press the button.

WARNING

Always use the restraint system.

Make sure that your child is firmly secured.

ADJUSTING THE SAFETY BELTS OF THE SEAT UNIT

28 To change the height of the seat unit's safety belts, undo the press stud on the back of the seat unit.

29 Remove the belts from the rear adjusting handle of the seat unit, one after the other, and pull them through the front of the seat unit.

30 Carefully insert the belts through the next seat unit cushioning hole, both above and below. Insert the bottom strap of the belt through the hole in the back of the seat unit and fasten it on the inside. Insert the upper strap of the belt through the same hole in the back of the seat unit until it slides into the back side of the seat unit. Place the strap on the rear adjusting handle of the seat unit. Make sure both belts are at the same height and correctly fastened.

WARNING

Make sure that all the locking points are correctly fastened and that the seat belts are attached to the pushchair.

FOLDING THE SEAT UNIT TOGETHER WITH THE CHASSIS

31 Apply the brake. To fold the chassis, make sure the front wheels of the pushchair are not blocked: they must rotate around a vertical axis. Make sure the leg cover of the seat unit is removed and the shopping bag is empty. Fold the back of the seat unit to a 90-degree angle and press the buttons on both sides of the frame at the same time while pulling the eyelets towards you.

Set the handle to its lower position. While holding the chassis handle, gently push the frame down until it bends into a horizontal position. Make sure the guard on the side of the chassis is fitted. To reduce the space the chassis takes up, fold the footrest down and remove the rear wheels of the pushchair.

32 To unfold the chassis seat unit, first remove the guard on the side of the chassis. While holding the chassis handle, lift it upwards so that the chassis folds out and locks fully in place. Place the folded chassis on the floor.

WARNING

When unfolding and folding up the pushchair, make sure there are no children in or near it.

To avoid injury, make sure that children are kept a safe distance away from any moving parts of the pushchair.

Always check that the chassis is locked before use.

USING THE RAIN COVER AND MOSQUITO NET

33 The pushchair has a cover that fits its canopy and seat. Place the guard on the pushchair's seat unit so that the window would be in front of your child.

34 The pushchair has a mosquito net that fits its seat unit. Place it over the seat and canopy.

FITTING/REMOVING THE CAR SEAT

35

Apply the brake. Insert the car seat adapters into the brackets on the inside of the chassis. Insert the car seat's locking points into the specially-fitted adapters. The locking points of the pushchair body lock automatically: make sure they are locked in place before using the pushchair.

36

Apply the brake. Make sure the handle of the car seat is at a 90 degree angle. To remove the car seat, press the buttons on the body of the car seat simultaneously and lift by the handle.

WARNING

Do not place additional mattresses in the car seat. Only use the original mattress supplied with the car seat.

Always check that the car seat is properly secured on both sides.

Only ever lift the car seat by its handle.

Do not leave the car seat near stairs, tables or any other places where it may fall.

Never use the car seat as a bed for your child.

FITTING/REMOVING THE CAR SEAT ROOF AND LEG COVER

37

The car seat has separate roof and foot covers that can be fitted and removed and that are secured on both sides of the car seat by the press studs near the handle.

38

ADJUSTING THE CAR SEAT HANDLE

Press the buttons on the sides of the handle at the same time and gently tilt the handle forwards or backwards into the desired position. The locking points of the handle should lock automatically.

WARNING

To avoid injury, make sure that children are kept a safe distance away from any moving parts of the pushchair.

FASTENING/UNFASTENING OF THE SAFETY BELTS THE CAR SEAT

39

The car seat has a 3-point safety belt system. When the child is seated in the car seat, the safety belts must be fastened. Insert the levers into the lock until it locks into place: tighten the safety belts by pulling the belt at the foot of the car seat.

40

To unfasten the safety belts of the car seat, release them by pressing the button at the foot of the car seat. Push the levers and then pull them out of the lock.

WARNING

Always fasten your child into the pushchair with seat belts.

Make sure that all the locking points are correctly fastened and that the safety belts are attached to the pushchair.

MAINTENANCE OF THE PRODUCT

SEAT UNIT AND CARRYCOT

Never leave the carrycot/seat unit in direct sunlight for an extended period of time. Prolonged exposure to sunlight may result in discoloration of the carrycot/seat unit.

- Always use the protective cover if it rains or snows.
- To prevent condensation and mould, do not store the stroller in a humid room or in any room with exposed to fluctuations in temperature.

FABRIC CARE:

- Use a damp cloth to clean fabrics including the handles of the chassis, seat unit and carrycot.
- Use a clothes steamer to iron fabrics.

CHASSIS:

- If the chassis gets wet, wipe it with a dry cloth and dry it. Dry it naturally, away from a naked flame or other sources of heat. Make sure the stroller is completely dry before storing it away.
- If you are using the stroller near the sea or on a gritted road, wash the chassis in clean running (tap) water and dry it to prevent rust.
- Use the silicone lubricant provided to lubricate moving parts.
- Check regularly for loose rivets, bolts or nuts.
- The allowable deviation of a new stroller from a straight trajectory on a smooth track is 10 centimetres for every metre.

WHEELS:

- The stroller can be supplied with inflatable wheels. For these wheels, the maximum pressure is 0.8 bar (115 psi). A soft tyre provides better cushioning over rough terrain. Pressures higher than 0.8 bar (115 psi) can deform the rim or cause the tube to explode.
- Lubricate the rear and front axles before using the stroller for the first time.
- Exposure to water, salt, sand, dirt or dust can cause the axles to corrode. Lubricate the axles with grease at least once a month. Clean the axles with a disposable cloth before lubricating them.
- Apply a thin layer of lubricant to the rubber at the top of the front fork if you notice that the pushchair has lost manoeuvrability.
- The permissible wheel stroke of a new pushchair is +/- 1mm.

BRAKE SYSTEM:

- The brake system consists of moving parts and requires regular maintenance.
- Never use force to apply or release the brakes.
- Sand, dust or dirt can interfere with the brake system. If you notice that the system is not working or that it is working harder than usual, rinse with a lubricant spray or jet of water before brushing and lubricating the working surfaces of the nbrake pedal.

STORAGE AND TRANSPORT:

- Do not overload the product or crush the product with the lid of your car boot, as prolonged loading can permanently deform parts of the product, in particular the wheels and the sunshade of the carrycot and seat unit.
- We recommend removing the rear and front wheels from the chassis if storing it for an extended period.

LIMITE WARRANTY

1. Your Tutis stroller is covered by a 24-month limited warranty for the original stroller, from the date of purchase, against defects in manufacturing or material, based on normal use and as long as these instructions have been followed.
2. This limited warranty is valid only in the original country of purchase.
3. The manufacturer's warranty provides a right to repair unless Tututis believes that the product needs to be replaced or returned.
4. Tututis reserves the right to stop manufacturing a particular model, colour, fabric or accessory, meaning that it will replace a faulty part with a similar product, colour or fabric during the manufacturer's warranty period.
5. To claim under this manufacturer's warranty you must provide Tututis with the following:
 - a copy of ypur dated sales receipt,
 - a clear description of your complaint and
 - the faulty product and/or photographs of the faulty part or product.
6. This warranty does not exclude, limit or otherwise affect any statutory consumer rights, including claims in tort or claims with respect to a breach of contract, which the buyer may have against the seller or manufacturer of the product.
7. Tututis reserves the right to determine if the terms and conditions of the limited warranty have been met.

The following is NOT COVERED under this limited warranty:

1. Damage due to normal wear and tear from everyday use, negligence or accident.
2. Damage caused by misuse or poor maintenance. Please refer to this manual for guidance on correct use and maintenance.
3. Damage caused by corrosion, mould or rust due to a lack of maintenance or service.
4. Damage icaused by airline handling or shipping.

5. Damage to the tyres.
6. Damage caused by intense exposure to the sun, sweat, detergents, storage in damp conditions or frequent washing.
7. Issues caused by minor variations in materials (e.g. discolouration between parts).`
8. Damage caused by repair or modifications by a third part.
9. Consequential damage, for example injury or damage inflicted on any persons or other objects.
10. Incorrect fitting or installation of third-part parts that are incompatible with the product.
11. Inadvertent or unintentional damage, abnormal use or insufficient care.
12. Improper storage / or care of the product.
13. Dissatisfaction on the part of the customer with the product in terms its fit, weight, functionality, colour or design.

Important:

The manufacturer's warranty period for this product is 24 months from the date of purchase indicated on the sales receipt. Save the sales receipt in a safe place and make a copy of it. If you submit a claim under this manufacturer's warranty, you must first contact your retailer. If your retailer is unable to repair the defect or if you purchased the product directly from Tututis, you can contact Tututis by sending an e-mail to support@tututis.It or calling +370 372 67259. You must also contact your retailer with any complaints that arise outside the manufacturer's warranty period.

Customer service:

If you have any questions regarding your Tutis product, please contact Customer Service

Telephone: +370 372 67259, +370 656 05846

E-mail: support@tututis.It



